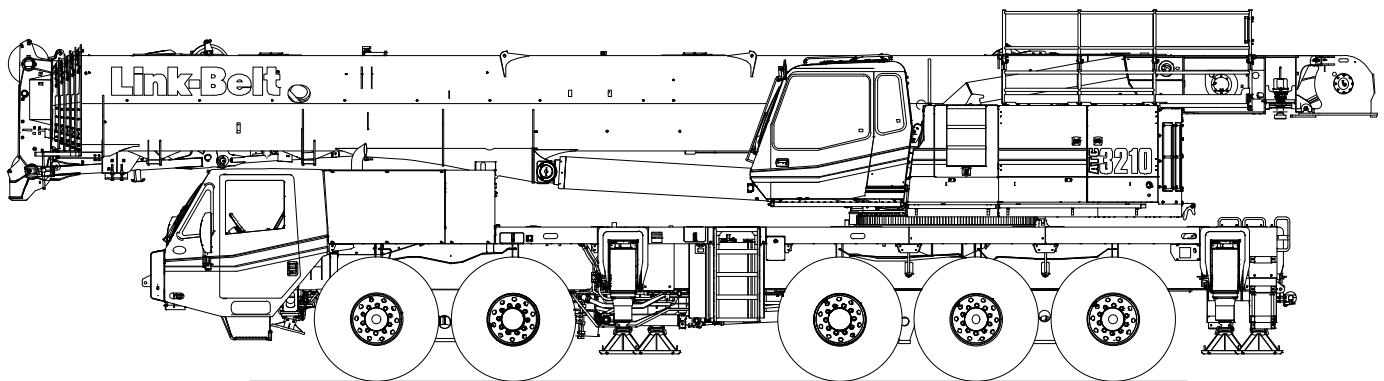


# Technical Data

## Specifications & Capacities

# ATC 3210

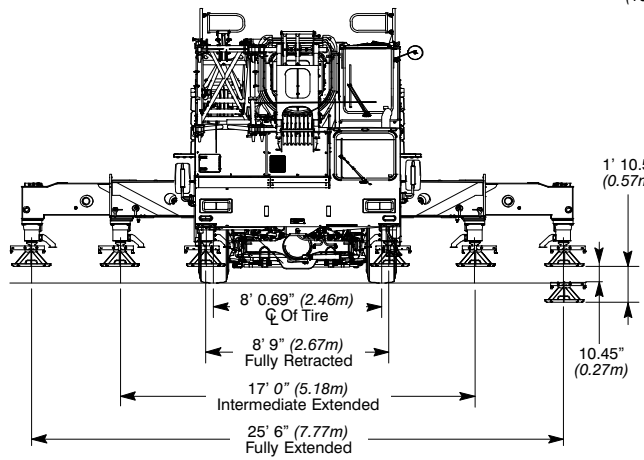
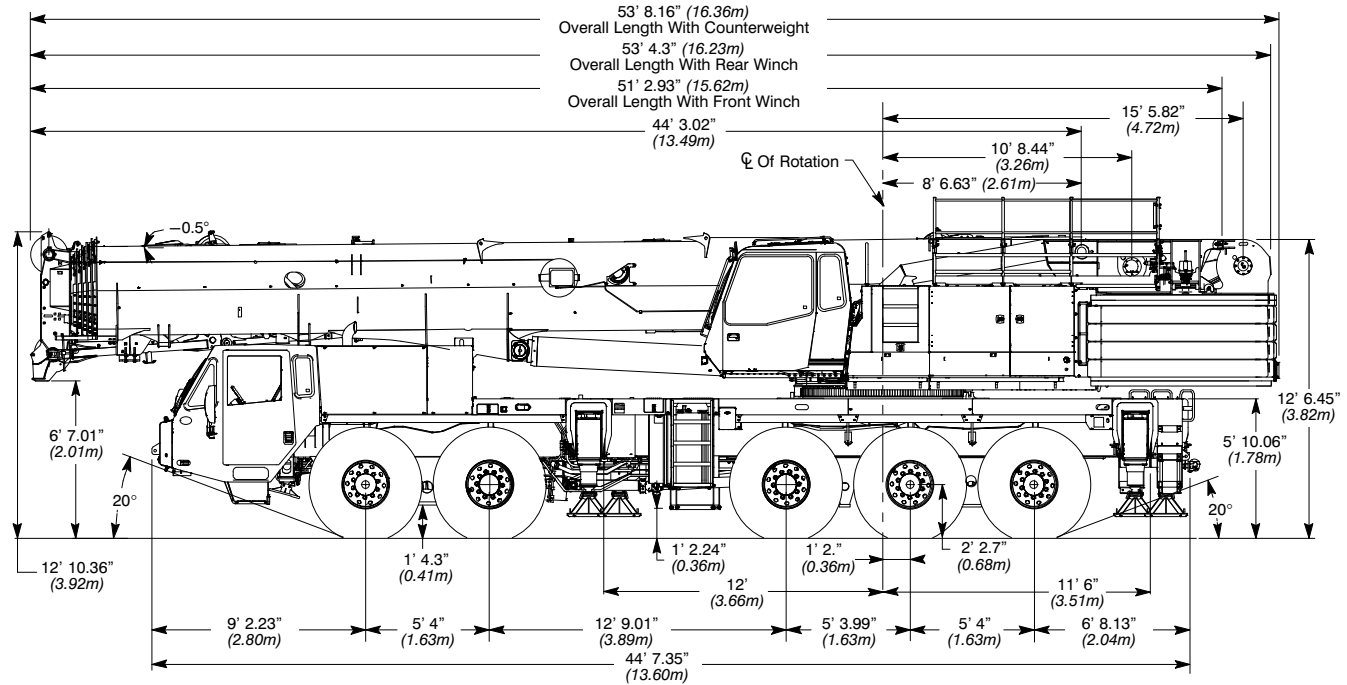
Telescopic Boom All Terrain Crane  
**210 US ton**  
**185 metric ton**



**CAUTION:** This material is supplied for reference use only. Operator must refer to in-cab Crane Rating Manual and Operator's Manual to determine allowable crane lifting capacities and assembly and operating procedures.

**CROFTON**

# General Dimensions



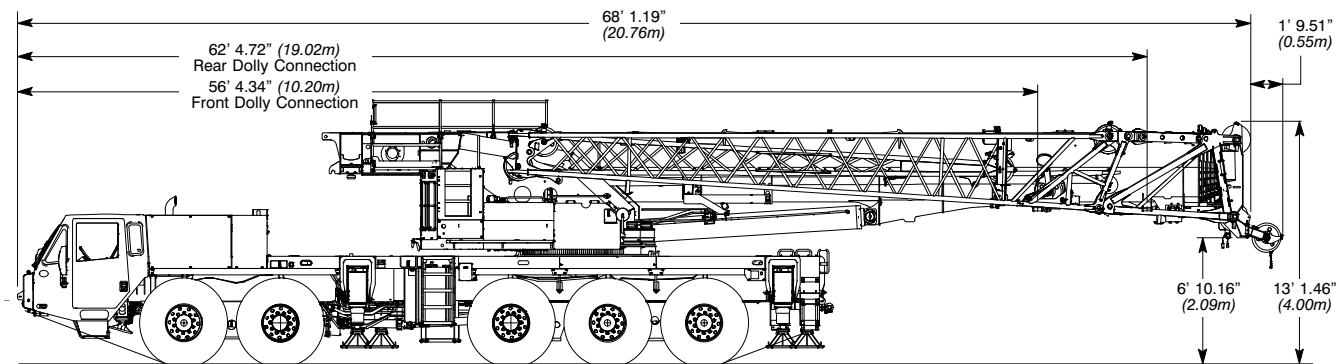
Turning Radius	20.5R25		16.00R25	
	English	Metric	English	Metric
Wall to wall over carrier	42' 0"	12.8m	41' 6"	12.6m
Wall to wall over boom	42' 6"	12.9m	42' 2"	12.8m
Wall to wall over boom attachment	44' 11"	13.7m	44' 6"	13.5m
Curb to curb	37' 1"	11.3m	36' 3"	11.04m
Centerline of tire	36' 2"	11.0m	35' 6"	10.8m

Tail Swing	English	Metric
With auxiliary winch	16' 11"	5.1m
Without auxiliary winch	14' 8"	4.7m
With Counterweight	17' 1"	5.21m

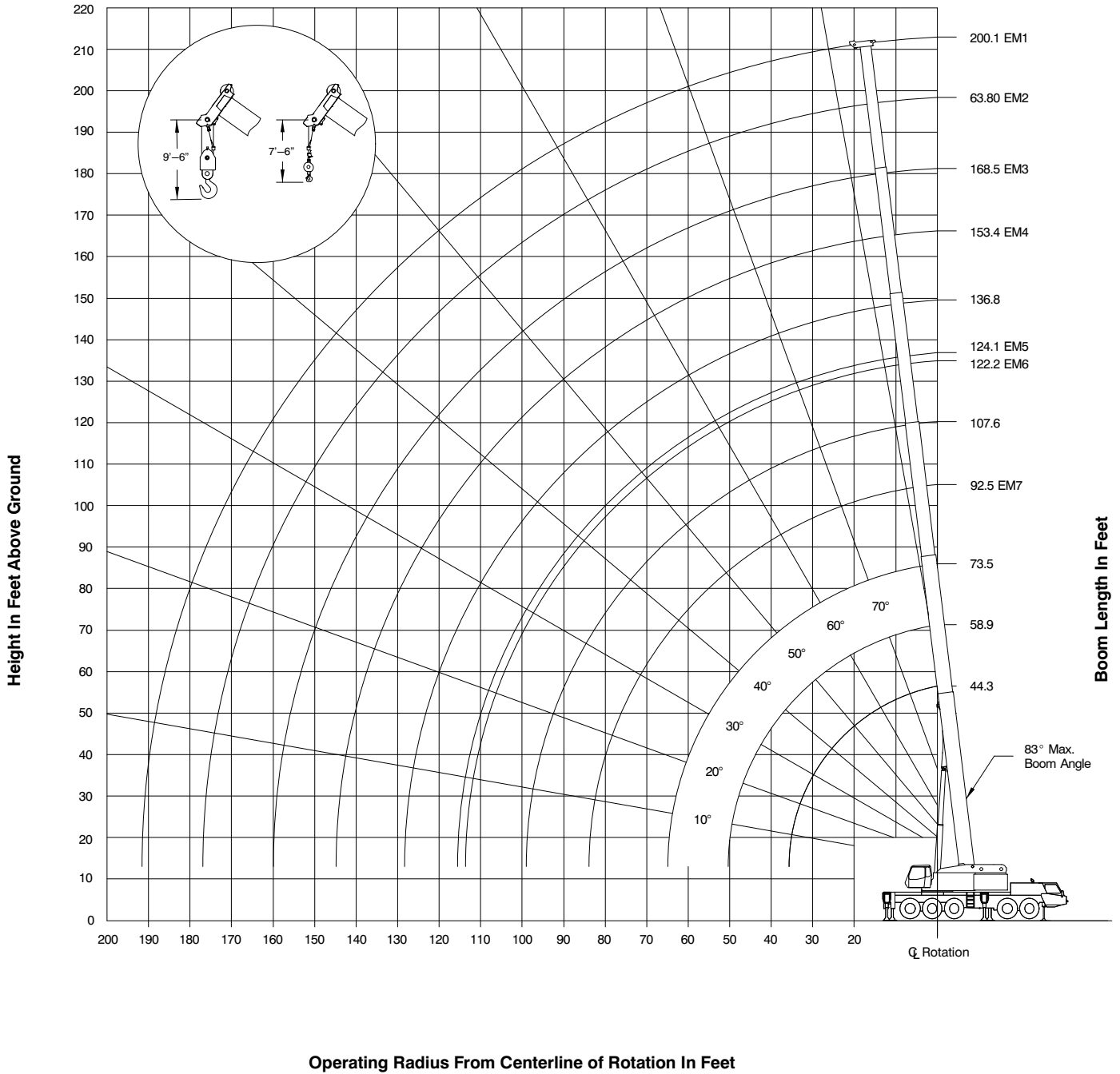
  

Overall Width	English	Metric
With 14,000 lb (6.3t) counterweight	9' 10"	3.0m
With 36,000–115,000 lb (16.3t–52.4t) counterweight	10' 3"	3.1m

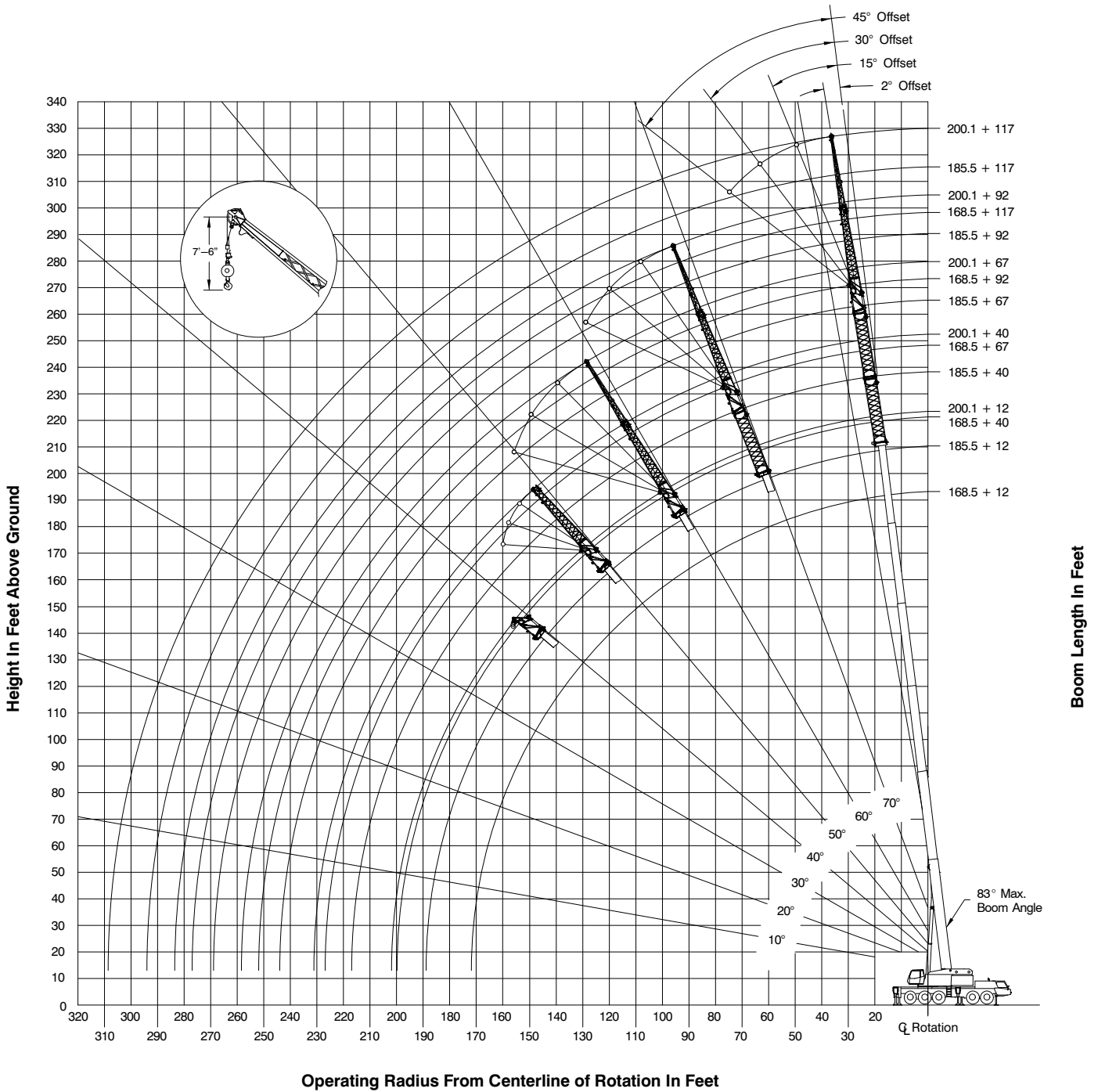


Not To Scale

# Working Range Diagram – Main Boom



# Working Range Diagram – Main Boom + Fly



**115,500 lb Counterweight - Fully Extended Outriggers - 360° Rotation**  
**(All Capacities Are Listed In Pounds)**

Radius (ft)	Boom Length (ft)											Radius (ft)	
	44.3	58.9–59.8	73.5–75.9	88.6–92.4	103.7–107.5	119.3–124.1	134.9–136.8	151.9–153.3	167–168.9	183.6–185.5	200.1		
8	420,000 **												8
10	300,000	297,300	262,200	212,200									10
12	268,200	269,500	256,800	212,200									12
15	233,200	235,200	232,200	205,500	128,900								15
20	189,400	192,100	191,000	184,600	172,300	129,700	91,400						20
25	157,800	160,900	160,000	158,700	153,000	120,900	91,400	73,000	41,200				25
30	133,000	137,200	136,300	135,000	136,500	118,300	85,500	73,000	55,000	41,300			30
35	111,300	115,700	117,000	116,700	115,300	107,800	79,100	73,000	55,000	41,300	33,000		35
40		99,400	100,700	100,500	99,200	98,900	73,500	69,700	55,000	41,300	33,000		40
45		87,400	87,800	87,700	86,500	88,000	68,600	63,800	55,000	41,300	33,000		45
50		76,100	77,500	77,400	77,400	77,900	64,100	58,600	53,500	41,300	33,000		50
55			70,700	70,800	70,800	69,400	60,400	54,100	50,500	41,300	33,000		55
60			63,700	64,200	63,800	62,400	57,000	50,100	47,600	40,200	33,000		60
65			55,900	58,200	57,700	56,300	54,000	46,500	44,300	37,800	33,000		65
70				53,000	52,500	51,300	51,300	43,300	41,400	35,600	33,000		70
75				48,500	48,000	46,800	48,100	40,500	38,700	33,700	32,600		75
80				42,200	44,100	42,900	44,100	37,900	36,400	31,900	30,800		80
85					40,100	40,900	40,100	35,600	34,200	30,200	29,100		85
90					36,600	38,000	36,600	33,400	32,200	28,600	27,600		90
95					33,600	34,900	33,700	31,700	30,300	27,200	26,200		95
100						32,300	31,000	30,400	28,600	25,800	25,000		100
105						29,900	28,500	29,100	27,100	24,400	23,800		105
110						25,000	26,400	27,100	25,600	23,000	22,400		110
115						20,600	24,400	25,100	24,100	21,600	21,400		115
120							23,300	23,300	22,300	20,400	20,400		120
125							21,000	21,700	20,700	19,400	19,600		125
130								20,200	19,200	18,300	18,700		130
135								18,800	17,800	17,100	17,700		135
140								17,600	16,700	15,900	16,700		140
145									15,500	15,000	15,600		145
150									14,500	14,400	14,500		150
155									13,500	13,800	13,500		155
160									10,200	13,200	12,500		160
165										12,500	11,700		165
170										11,700	10,800		170
175										9,300	10,100		175
180											9,400		180
185											8,700		185

Note: Capacities depict multiple boom modes.  
 \*\* Over rear intermediate outriggers, additional equipment required.

This information is not for crane operation. Operator must refer to the in-cab information for crane operation. Rated lifting capacities shown on fully extended outriggers do not exceed 85% of the tipping loads.