

CROFTON

Introduces the Video Ray Ally ROV



UNDERWATER TECHNOLOGY

Mission Specialist Ally

Compact. Powerful. Reliable.

CROFTON puts decades of underwater experience to work every day on behalf of our customers. While there's no substitute for the skilled professional diver, we can integrate technology when appropriate and leverage its benefits. Employing an ROV in the right environment can increase the safety and efficiency of an underwater operation. The Mission Specialist Ally ROV is designed for optimal power and lift, all within a compact design, making it an ideal resource for common underwater project environments. When you work with CROFTON, we put the winning combination of human expertise and technology to work for you to find practical solutions with optimal results.

INDUSTRY ENVIRONMENTS:

- Utility & Energy Infrastructure
- Shipbuilding & Repair
- Underwater Construction
- Civil Infrastructure

APPLICATIONS AND CAPABILITIES:

- Underwater Inspection
- Search & Recovery
- Survey & Mapping
- Emergency Response
- Target Identification
- Research & Development
- Side Scan Sonar
- Differential Pressure Checks

CONNECT WITH US



CONTACT US FOR A QUOTE TODAY

757-397-1131 | BIDCROFTON@CROFTON.COM



SUBMERSIBLE INFORMATION

Depth: 984 ft (300 m)
Weight in Air: 30lb (13.6 kg) - No Payloads
34.8 lb (15.8 kg) - W/ Oculus 750 Sonar
Reach Alpha Manipulator
Manipulator: 90 - 180 Degree Spring Loaded Manipulator

VEHICLE SIZE WITH FLOAT

L 25.25 x 12 in Diameter
(L 64.1 x 30.5 cm Diameter)

PROPULSION

2 Horizontal Thrusters: 37 lbs, / 16.8 kg, 4 Knots
2 Vertical Thrusters: 21 lbs / 9.5 kg, 1.5 Knots
Lateral Thrust: 13.5 lbs / 6.1 kg, 1 Knot

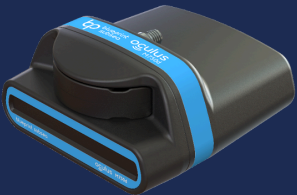
ULTRA 4K SMART CAMERA

With the ability to run multiple neural networks and process high-resolution data, this camera is not just a visual device but an intelligent partner capable of advanced image processing and autonomous decision-making.



Processor: NVIDIA Jetson Orin NX
Image Quality: 12MP Resolution (4.7k)
150ms Latency
Up to 60 Frames per Second
3.5 - 15Mbps Bandwidth

Features: 1 TB SSD
Auto-White Balance
Electronic Focus
Image Unwarp
Digital Pan, Tilt, and Zoom
Color Enhancement



OCULUS M750d - Doppler Velocity Log (DVL)

Accurate position tracking and navigation in challenging underwater environments.

CROFTON

and

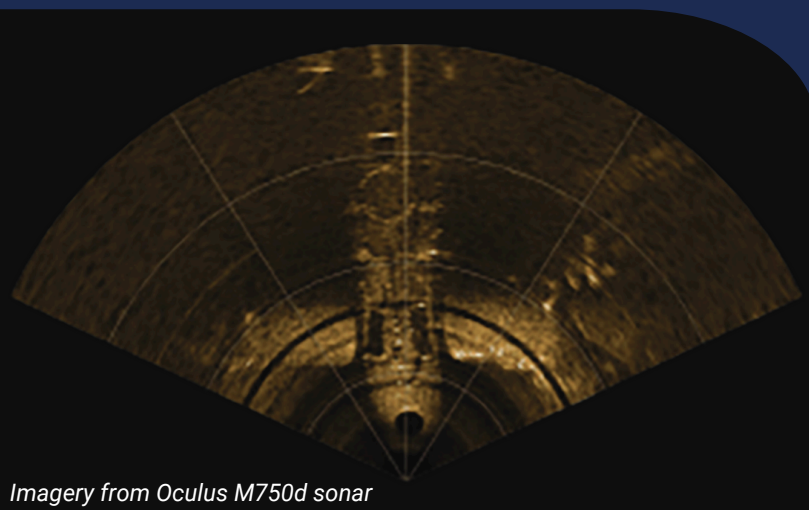
VideoRay



YOUR ULTIMATE UNDERWATER ALLY!



WATCH VIDEO



Imagery from Oculus M750d sonar