

Courtesy of



CROFTON
INDUSTRIES

ML 8090

II
SERIES
II

90-ton (80.0 mt) Rough Terrain Crane

- Full power latching boom with quick reeve boom head
- 38-140 ft (11.6-42.7 m) five section, full power latching boom with quick reeve boom head
- Boom wear pads have Teflon pucks that lubricate the boom sections (no grease)
- Three boom extend modes.
- No charted capacity reductions for telescoping loads.
- 35-58 ft (10.7-17.7 m) two piece, on-board lattice fly with 2°, 15°, 30°, and 45° offsets
- One 16 ft (4.9 m) lattice insert plus 58 ft (17.7 m) two-piece offsettable fly option
- Two 16 ft (4.9 m) lattice inserts plus 58 ft (17.7 m) two-piece offsettable fly option
- No deducts for stowed attachments
- 238 ft (72.5 m) maximum tip height
- 16,880 lbs (7 656.6 kg) maximum winch line pull
- 459 fpm (139.9 m/min) maximum winch line speed
- Next generation operator's cab with improved visibility and ergonomics
- 225 hp (168kW) Caterpillar engine with 724 ft-lbs (981J) of torque
- Spicer 6-speed power shift transmission
- 4x2 and 4x4 drive with 29.5x25-28PR tires
- Four steering modes: independent front, combination, crab, and independent rear
- 4 link rear suspension with optional hydro-gas suspension
- Modular counterweight design for multiple transport and lift scenarios



RTC 8090



90-ton (80.0 mt) Rough Terrain Crane

Remarkable control, reliability and capacity performance

- **Caterpillar C6.6 electronic engine** with 225 hp (168 kW) provides 724 lb-ft (981 Nm) of torque
- Electronic throttle for improved throttle response
- **Two automotive-style batteries** linked in parallel provide 700 cold cranking amps each for cold weather starting
- Rugged, lightweight **steel pontoons**
- Hydraulic disc brakes for both service brakes and parking brake
- **Metri-Pak wire harnesses** have sealed relays and connectors throughout for outstanding long-term reliability. All wires have flame retardant polyethylene insulation, resulting in a higher heat resistant wiring system.

5-section full power latching boom with attachment flexibility

- 38-140 ft (11.6-42.7 m) **five-section boom** with three extend modes.
- No charted capacity reductions for telescoping loads.
- **Boom wear pads** have Teflon pucks that lubricate the boom sections (no grease)
- **Maximum tip height** is 238 ft with the attachment and main boom used in combination
- Optional 35 ft (10.7 m) **one-piece lattice fly** and optional 35 ft to 58 ft (10.7 m to 17.7 m) **two-piece bi-fold lattice fly** are offsettable to 2°, 15°, 30° and 45°.
- Optional 16 ft (4.9 m) lattice insert used alone or with 58 ft (17.7 m) two-piece offsettable fly
- Optional two 16 ft (4.9 m) lattice inserts plus 58 ft (17.7 m) two-piece offsettable fly



Operator cab features

- **Extra large front window** almost seamlessly merges into the roof window
- **Sliding left side door**, right and rear windows, and swing up top window provide excellent ventilation
- **All gauges, switches, indicators, and controls** are placed in the operator's forward line of sight for excellent ergonomics
- **All gauges and switches are backlit** for excellent visibility when the cab working lights are switched to the on position
- **Integral rated capacity limiter** aids operator in safe and efficient operation by continuously monitoring boom length, boom angle, head height, radius of load, machine configuration, allowed load, and percent of allowed load.
- Available — **Integrated air conditioning** utilizes the same ventilation outlets as the standard heating system



Powerful hydraulics

- For greater productivity and control, the **five-pump hydraulic circuit** allows simultaneous function of boom hoist, winch and swing.
- Piston motor hydraulic hoist system delivers **superior hoisting**. Matched sizes of main and auxiliary winches provide equal maximum available line pulls of 16,880 lbs (7 656.6 kg) and maximum line speeds of 459 fpm (140 m/min) on 16" (40.6 cm) root diameter drums.



Job site maneuverability

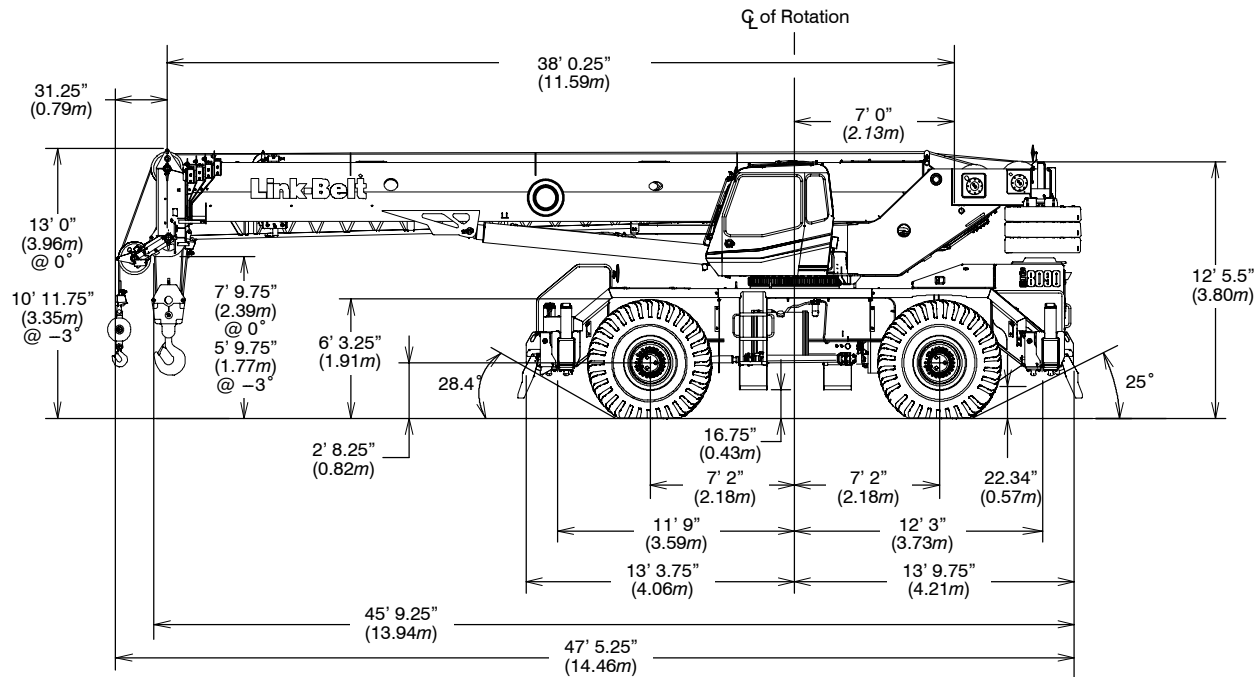
- **CALC** — Outrigger beams have three different stages (retracted, intermediate, and fully extended) providing lifting capacities in confined areas.
- **Steering modes** are chosen and performed with the steering wheel and include independent front steer, independent rear, four wheel steer, and "crab" steering.

Link-Belt Construction Equipment Company - Lexington, Kentucky
www.linkbelt.com

© Link-Belt is a registered trademark. Copyright 2006. All rights reserved.
We reserve the right to change designs and specifications at any time.
Litho in U.S.A. 10/06 474 #4328



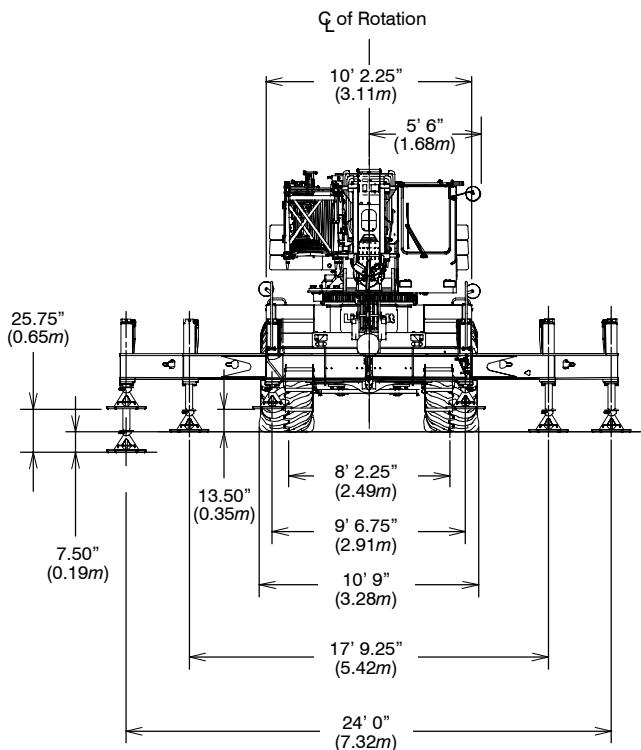
General Dimensions



| Turning Radius – Front Wheel (4x2) Steering | English | Metric |
|---|---------|--------|
| Wall to wall over carrier | 48' 3" | 14.71m |
| Wall to wall over boom attachment | 60' 1" | 18.32m |
| Curb to curb | 46' 8" | 13.80m |
| Centerline of tire | 45' 4" | 10.28m |

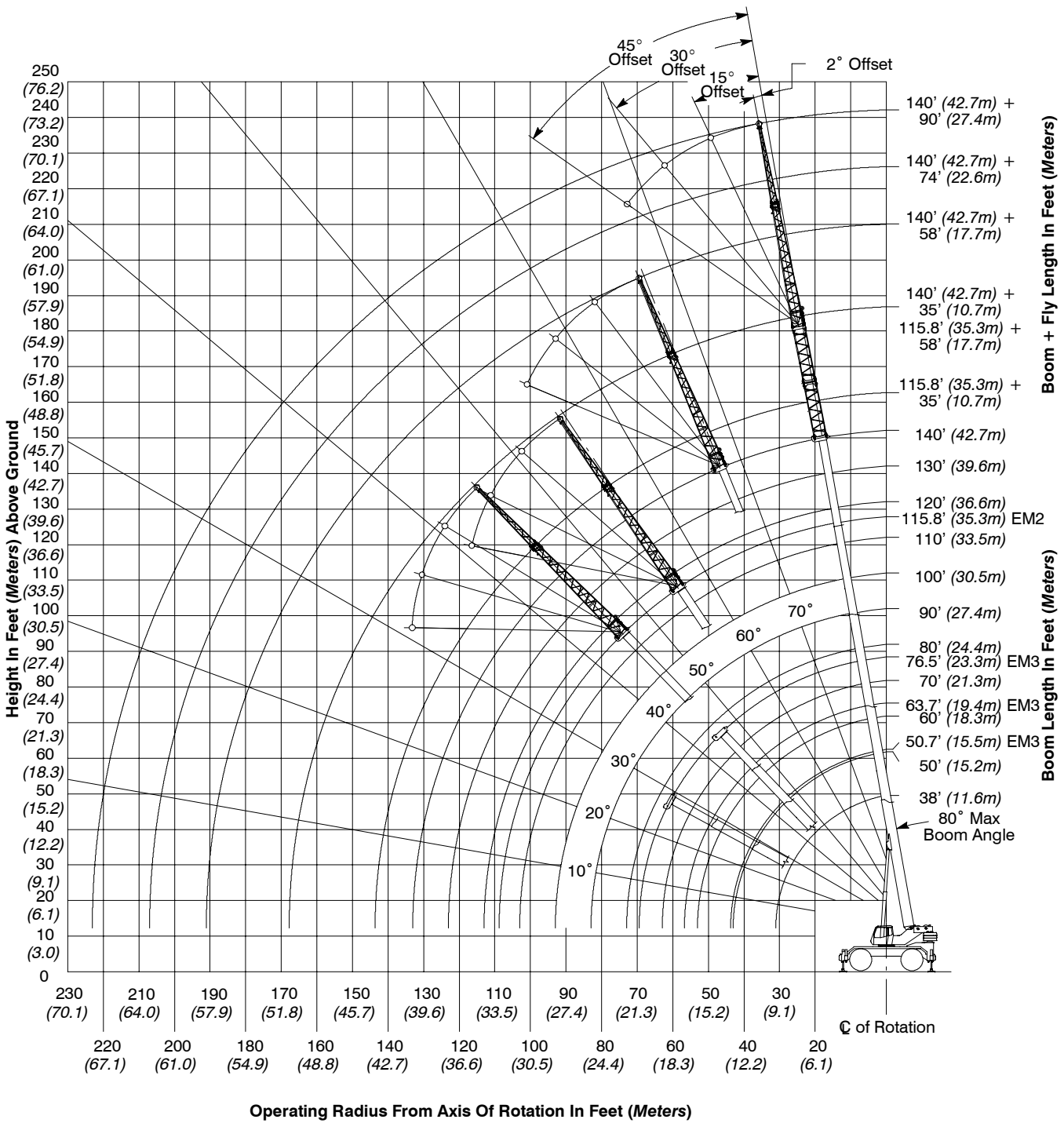
| Turning Radius – All Wheel (4x4) Steering | English | Metric |
|---|---------|--------|
| Wall to wall over carrier | 27' 10" | 8.49m |
| Wall to wall over boom attachment | 38' 11" | 11.86m |
| Curb to curb | 26' 0" | 7.91m |
| Centerline of tire | 24' 7" | 7.50m |

| Tail Swing | English | Metric |
|-----------------------|---------|--------|
| With counterweight | 14' 2" | 4.32m |
| Without counterweight | 13' 2" | 3.97m |



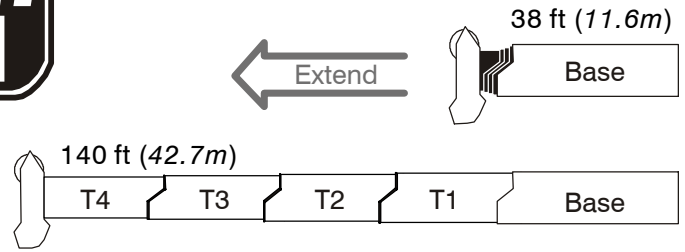
Not To Scale

Working Range Diagram

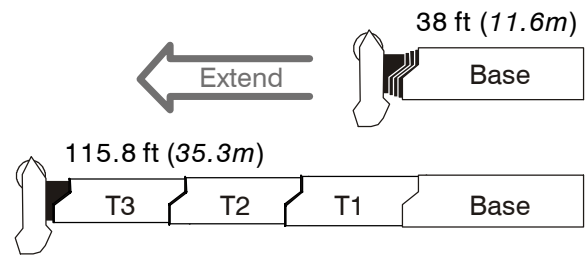


Boom Extend Modes

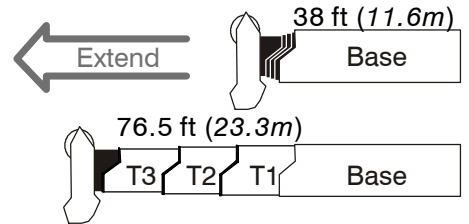
| Boom Length | | Section Length | | | |
|-------------|------|----------------|------|------|------|
| ft | m | T4 | T3 | T2 | T1 |
| 50 | 15.2 | 50% | | | |
| 60 | 18.3 | 91% | | | |
| 70 | 21.3 | 100% | 31% | | |
| 80 | 24.4 | 100% | 71% | | |
| 90 | 27.4 | 100% | 100% | 11% | |
| 100 | 30.5 | 100% | 100% | 49% | |
| 110 | 33.5 | 100% | 100% | 88% | |
| 120 | 36.6 | 100% | 100% | 100% | 25% |
| 130 | 39.6 | 100% | 100% | 100% | 63% |
| 140 | 42.7 | 100% | 100% | 100% | 100% |



| Boom Length | | Section Length | | | |
|-------------|------|----------------|------|------|------|
| ft | m | T4 | T3 | T2 | T1 |
| 50 | 15.2 | 0% | 48% | | |
| 60 | 18.3 | 0% | 88% | | |
| 70 | 21.3 | 0% | 100% | 27% | |
| 80 | 24.4 | 0% | 100% | 65% | |
| 90 | 27.4 | 0% | 100% | 100% | 4% |
| 100 | 30.5 | 0% | 100% | 100% | 41% |
| 115.8 | 35.3 | 0% | 100% | 100% | 100% |



| Boom Length | | Section Length | | | |
|-------------|------|----------------|-----|-----|-----|
| ft | m | T4 | T3 | T2 | T1 |
| 50.7 | 15.5 | 0% | 51% | | |
| 63.7 | 19.4 | 0% | 51% | 50% | |
| 76.5 | 23.3 | 0% | 51% | 50% | 48% |



Main Boom Lift Capacity Charts – Standard

| 19,200 lb Counterweight – Fully Extended Outriggers – 360° Rotation (All Capacities Are Listed In Pounds) | | | | | | | | | | | | |
|--|------------------|---------|---------|--------|--------|--------|--------|--------|--------|--------|--------|-------------|
| Radius (ft) | Boom Length (ft) | | | | | | | | | | | Radius (ft) |
| | 38 | 50 | 60 | 70 | 80 | 90 | 100 | 110 | 120 | 130 | 140 | |
| 8 | 180,000* | | | | | | | | | | | 8 |
| 10 | 160,000 | 152,000 | 117,900 | 70,800 | | | | | | | | 10 |
| 12 | 138,000 | 138,600 | 108,800 | 70,800 | 85,100 | | | | | | | 12 |
| 15 | 109,500 | 111,700 | 106,500 | 70,800 | 78,400 | 54,200 | | | | | | 15 |
| 20 | 80,100 | 82,400 | 82,800 | 63,500 | 76,500 | 52,000 | 49,100 | 27,200 | | | | 20 |
| 25 | 62,000 | 64,300 | 64,800 | 54,800 | 64,300 | 45,600 | 45,200 | 36,300 | 28,000 | 26,900 | | 25 |
| 30 | 49,700 | 52,000 | 52,600 | 47,800 | 52,100 | 40,600 | 42,200 | 35,900 | 28,000 | 26,500 | 24,400 | 30 |
| 35 | | 42,900 | 44,100 | 42,500 | 42,800 | 36,500 | 38,300 | 35,500 | 28,000 | 26,300 | 24,100 | 35 |
| 40 | | 34,300 | 34,600 | 35,000 | 35,100 | 33,000 | 34,700 | 33,400 | 28,000 | 26,100 | 24,000 | 40 |
| 45 | | | 28,100 | 28,400 | 28,500 | 28,500 | 28,100 | 27,500 | 26,100 | 25,900 | 23,800 | 45 |
| 50 | | | 23,200 | 23,600 | 23,700 | 23,800 | 23,300 | 23,800 | 24,100 | 24,600 | 23,700 | 50 |
| 55 | | | 19,000 | 20,800 | 21,300 | 20,000 | 21,300 | 21,700 | 21,300 | 20,900 | 20,500 | 55 |
| 60 | | | | 18,400 | 18,800 | 18,300 | 18,800 | 18,700 | 18,300 | 17,900 | 17,600 | 60 |
| 65 | | | | | 16,300 | 16,500 | 16,400 | 16,300 | 15,900 | 15,500 | 15,100 | 65 |
| 70 | | | | | 14,300 | 14,500 | 14,400 | 14,300 | 13,900 | 13,500 | 13,200 | 70 |
| 75 | | | | | | 12,800 | 12,800 | 12,700 | 12,300 | 12,000 | 11,600 | 75 |
| 80 | | | | | | 11,400 | 11,300 | 11,200 | 10,900 | 10,500 | 10,200 | 80 |
| 85 | | | | | | | 10,100 | 10,000 | 9,700 | 9,300 | 9,000 | 85 |
| 90 | | | | | | | 9,000 | 8,900 | 8,600 | 8,200 | 7,900 | 90 |
| 95 | | | | | | | | 8,000 | 7,700 | 7,300 | 7,000 | 95 |
| 100 | | | | | | | | 7,100 | 6,800 | 6,500 | 6,200 | 100 |
| 105 | | | | | | | | 4,200 | 6,100 | 5,700 | 5,400 | 105 |
| 110 | | | | | | | | | 5,400 | 5,100 | 4,700 | 110 |
| 115 | | | | | | | | | | 4,500 | 4,200 | 115 |
| 120 | | | | | | | | | | 3,900 | 3,600 | 120 |
| 125 | | | | | | | | | | | 3,100 | 125 |
| 130 | | | | | | | | | | | 2,700 | 130 |

* Special Conditions Or Wire Rope Required

This information is not for crane operation. Operator must refer to the in-cab information for crane operation. Rated lifting capacities shown on fully extended outriggers do not exceed 85% of the tipping loads and on tires do not exceed 75% of the tipping loads.

| 19,200 lb Counterweight – On Tires – Stationary – Boom Centered Over Front Between Tire Tracks (All Capacities Are Listed In Pounds) | | | | | | | | | |
|--|------------------|--------|--------|--------|--------|--------|--------|--------|----------------|
| Radius (ft) | Boom Length (ft) | | | | | | | | Radius (ft) |
| | 38 | 50 | 60 | 70 | 80 | 90 | 100 | 110 | |
| 15 | 54,700 | | | | | | | | 15 |
| 20 | 43,300 | | | | | | | | 20 |
| 25 | 33,000 | 36,200 | | | | | | | 25 |
| 30 | 23,400 | 26,500 | 27,900 | | | | | | 30 |
| 35 | | 20,300 | 21,700 | 22,300 | | | | | 35 |
| 40 | | 15,900 | 17,300 | 17,900 | 18,300 | | | | 40 |
| 45 | | | 14,000 | 14,700 | 15,100 | 15,200 | | | 45 |
| 50 | | | 11,600 | 12,200 | 12,600 | 12,700 | 12,700 | | 50 |
| 55 | | | | 10,200 | 10,700 | 10,900 | 10,800 | 10,700 | 55 |
| 60 | | | | 8,600 | 9,000 | 9,200 | 9,200 | 9,100 | 60 |
| 65 | | | | | 7,700 | 7,900 | 7,800 | 7,800 | 65 |
| 70 | | | | | 6,600 | 6,800 | 6,700 | 6,700 | 70 |
| 75 | | | | | | 5,800 | 5,800 | 5,700 | 75 |
| 80 | | | | | | 5,000 | 4,900 | 4,900 | 80 |
| 85 | | | | | | | 4,200 | 4,200 | 85 |
| 90 | | | | | | | 3,600 | 3,500 | 90 |
| 95 | | | | | | | | 3,000 | 95 |
| 100 | | | | | | | | 2,500 | 100 |

This information is not for crane operation. Operator must refer to the in-cab information for crane operation. Rated lifting capacities shown on fully extended outriggers do not exceed 85% of the tipping loads and on tires do not exceed 75% of the tipping loads.

19,200 lb Counterweight – On Tires – Pick & Carry (Creep) – Boom Centered Over Front
 (All Capacities Are Listed In Pounds)

| Radius (ft) | Boom Length (ft) | | | | | | | | Radius (ft) |
|-------------|------------------|--------|--------|--------|--------|--------|--------|--------|-------------|
| | 38 | 50 | 60 | 70 | 80 | 90 | 100 | 110 | |
| 15 | 52,200 | | | | | | | | 15 |
| 20 | 40,100 | | | | | | | | 20 |
| 25 | 31,700 | 34,100 | | | | | | | 25 |
| 30 | 23,400 | 26,500 | 27,900 | | | | | | 30 |
| 35 | | 20,300 | 21,700 | 22,300 | | | | | 35 |
| 40 | | 15,900 | 17,300 | 17,900 | 18,300 | | | | 40 |
| 45 | | | 14,000 | 14,700 | 15,100 | 15,200 | | | 45 |
| 50 | | | 11,600 | 12,200 | 12,600 | 12,700 | 12,700 | | 50 |
| 55 | | | | 10,200 | 10,700 | 10,900 | 10,800 | 10,700 | 55 |
| 60 | | | | 8,600 | 9,000 | 9,200 | 9,200 | 9,100 | 60 |
| 65 | | | | | 7,700 | 7,900 | 7,800 | 7,800 | 65 |
| 70 | | | | | 6,600 | 6,800 | 6,700 | 6,700 | 70 |
| 75 | | | | | | 5,800 | 5,800 | 5,700 | 75 |
| 80 | | | | | | 5,000 | 4,900 | 4,900 | 80 |
| 85 | | | | | | | 4,200 | 4,200 | 85 |
| 90 | | | | | | | 3,600 | 3,500 | 90 |
| 95 | | | | | | | | 3,000 | 95 |
| 100 | | | | | | | | 2,500 | 100 |

19,200 lb Counterweight – On Tires – Stationary – 360° Rotation
 (All Capacities Are Listed In Pounds)

| Radius (ft) | Boom Length (ft) | | | | | | | | Radius (ft) |
|-------------|------------------|--------|--------|--------|-------|-------|-------|-------|-------------|
| | 38 | 50 | 60 | 70 | 80 | 90 | 100 | 110 | |
| 15 | 33,700 | | | | | | | | 15 |
| 20 | 20,400 | | | | | | | | 20 |
| 25 | 13,200 | 15,900 | | | | | | | 25 |
| 30 | 8,700 | 11,400 | 12,700 | | | | | | 30 |
| 35 | | 8,200 | 9,500 | 10,200 | | | | | 35 |
| 40 | | 5,900 | 7,200 | 7,800 | 8,200 | | | | 40 |
| 45 | | | 5,500 | 6,100 | 6,500 | 6,700 | | | 45 |
| 50 | | | 4,100 | 4,700 | 5,100 | 5,300 | 5,200 | | 50 |
| 55 | | | | 3,600 | 4,000 | 4,100 | 4,100 | 4,100 | 55 |
| 60 | | | | 2,700 | 3,000 | 3,200 | 3,200 | 3,100 | 60 |
| 65 | | | | | 2,300 | 2,500 | 2,400 | 2,400 | 65 |
| 70 | | | | | 1,600 | 1,800 | 1,800 | 1,700 | 70 |
| 75 | | | | | | 1,200 | 1,200 | 1,100 | 75 |

This information is not for crane operation. Operator must refer to the in-cab information for crane operation. Rated lifting capacities shown on fully extended outriggers do not exceed 85% of the tipping loads and on tires do not exceed 75% of the tipping loads.

28,800 lb Counterweight – Fully Extended Outriggers – 360° Rotation
(All Capacities Are Listed In Pounds)

| Radius (ft) | Boom Length (ft) | | | | | | | | | | | Radius (ft) | |
|----------------|------------------|---------|---------|--------|--------|--------|--------|--------|--------|--------|--------|----------------|-----|
| | 38 | 50 | 60 | 70 | 80 | 90 | 100 | 110 | 120 | 130 | 140 | | |
| 8 | 167,200 | | | | | | | | | | | | 8 |
| 10 | 155,800 | 152,000 | 117,900 | 70,800 | | | | | | | | | 10 |
| 12 | 139,600 | 138,600 | 108,800 | 70,800 | 85,100 | | | | | | | | 12 |
| 15 | 116,300 | 118,400 | 106,500 | 70,800 | 78,400 | 54,200 | | | | | | | 15 |
| 20 | 85,300 | 87,500 | 87,900 | 63,500 | 76,500 | 52,000 | 49,100 | 27,200 | | | | | 20 |
| 25 | 66,200 | 68,500 | 69,000 | 54,800 | 68,500 | 45,600 | 45,200 | 36,300 | 28,000 | 26,900 | | | 25 |
| 30 | 53,200 | 55,500 | 56,100 | 47,800 | 55,700 | 40,600 | 42,200 | 35,900 | 28,000 | 26,500 | 24,400 | | 30 |
| 35 | | 46,200 | 46,800 | 42,500 | 46,400 | 36,500 | 38,300 | 35,500 | 28,000 | 26,300 | 24,100 | | 35 |
| 40 | | 39,600 | 40,100 | 38,100 | 39,300 | 33,000 | 34,900 | 33,400 | 28,000 | 26,100 | 24,000 | | 40 |
| 45 | | | 34,200 | 34,500 | 33,800 | 30,100 | 32,100 | 30,300 | 26,100 | 25,900 | 23,800 | | 45 |
| 50 | | | 28,500 | 28,900 | 28,900 | 27,600 | 28,500 | 27,900 | 24,100 | 25,200 | 23,700 | | 50 |
| 55 | | | 23,700 | 24,600 | 24,700 | 24,700 | 24,300 | 23,800 | 22,300 | 23,500 | 23,600 | | 55 |
| 60 | | | | 21,100 | 21,200 | 21,300 | 20,900 | 20,400 | 20,700 | 21,900 | 21,700 | | 60 |
| 65 | | | | | 18,500 | 18,500 | 18,600 | 18,900 | 19,300 | 19,300 | 18,900 | | 65 |
| 70 | | | | | 17,300 | 16,200 | 17,500 | 17,700 | 17,400 | 17,000 | 16,600 | | 70 |
| 75 | | | | | | | 14,900 | 15,900 | 15,700 | 15,400 | 15,000 | 14,700 | 75 |
| 80 | | | | | | | 14,100 | 14,200 | 14,100 | 13,700 | 13,400 | 13,000 | 80 |
| 85 | | | | | | | | 12,800 | 12,700 | 12,400 | 12,000 | 11,700 | 85 |
| 90 | | | | | | | | 11,600 | 11,500 | 11,200 | 10,800 | 10,500 | 90 |
| 95 | | | | | | | | | 10,400 | 10,100 | 9,700 | 9,400 | 95 |
| 100 | | | | | | | | | 9,400 | 9,100 | 8,700 | 8,400 | 100 |
| 105 | | | | | | | | | 6,300 | 8,200 | 7,900 | 7,600 | 105 |
| 110 | | | | | | | | | | 7,400 | 7,100 | 6,800 | 110 |
| 115 | | | | | | | | | | | 6,400 | 6,100 | 115 |
| 120 | | | | | | | | | | | 5,800 | 5,500 | 120 |
| 125 | | | | | | | | | | | | 4,900 | 125 |
| 130 | | | | | | | | | | | | 4,400 | 130 |

This information is not for crane operation. Operator must refer to the in-cab information for crane operation. Rated lifting capacities shown on fully extended outriggers do not exceed 85% of the tipping loads and on tires do not exceed 75% of the tipping loads.

Fly Attachment Lift Capacity Charts – Optional

| 19,200 lb Counterweight – Fully Extended Outriggers – 360° Rotation (All Capacities Are Listed In Pounds) | | | | | | | | | |
|--|-----------------|-------|-------|-------|---|-----------------|-------|-------|-------|
| 140 ft Main Boom Length 2° Fly Offset | | | | | 140 ft Main Boom Length 15° Fly Offset | | | | |
| Radius (ft) | Fly Length (ft) | | | | Radius (ft) | Fly Length (ft) | | | |
| | 35 | 58 | 74 | 90 | | 35 | 58 | 74 | 90 |
| 35 | 12,100 | | | | 35 | | | | |
| 40 | 12,100 | | | | 40 | | | | |
| 45 | 12,100 | 8,500 | | | 45 | 11,500 | | | |
| 50 | 12,100 | 8,400 | 6,600 | | 50 | 11,400 | | | |
| 55 | 12,100 | 8,300 | 6,600 | 5,200 | 55 | 11,200 | | | |
| 60 | 12,100 | 8,100 | 6,600 | 5,200 | 60 | 11,000 | 7,200 | | |
| 65 | 11,900 | 8,000 | 6,600 | 5,200 | 65 | 10,800 | 7,000 | 6,300 | |
| 70 | 11,700 | 7,800 | 6,600 | 5,200 | 70 | 10,600 | 6,800 | 6,000 | 4,800 |
| 75 | 11,500 | 7,700 | 6,600 | 5,100 | 75 | 10,400 | 6,700 | 5,700 | 4,500 |
| 80 | 10,900 | 7,500 | 6,400 | 4,800 | 80 | 10,200 | 6,500 | 5,400 | 4,200 |
| 85 | 9,600 | 7,300 | 6,000 | 4,500 | 85 | 10,000 | 6,300 | 5,100 | 4,000 |
| 90 | 8,500 | 7,100 | 5,700 | 4,200 | 90 | 9,100 | 6,200 | 4,900 | 3,700 |
| 95 | 7,600 | 6,900 | 5,400 | 4,000 | 95 | 8,100 | 6,000 | 4,600 | 3,500 |
| 100 | 6,700 | 6,700 | 5,100 | 3,700 | 100 | 7,200 | 5,900 | 4,400 | 3,300 |
| 105 | 6,000 | 6,400 | 4,900 | 3,500 | 105 | 6,400 | 5,700 | 4,200 | 3,100 |
| 110 | 5,300 | 5,700 | 4,700 | 3,300 | 110 | 5,700 | 5,600 | 4,100 | 3,000 |
| 115 | 4,700 | 5,100 | 4,500 | 3,200 | 115 | 5,000 | 5,500 | 3,900 | 2,800 |
| 120 | 4,100 | 4,500 | 4,300 | 3,000 | 120 | 4,400 | 5,100 | 3,700 | 2,700 |
| 125 | 3,600 | 4,000 | 3,900 | 2,800 | 125 | 3,900 | 4,500 | 3,600 | 2,500 |
| 130 | 3,100 | 3,600 | 3,500 | 2,700 | 130 | 3,400 | 4,000 | 3,500 | 2,400 |
| 135 | 2,700 | 3,100 | 3,000 | 2,500 | 135 | 3,000 | 3,600 | 3,300 | 2,300 |
| 140 | 2,300 | 2,700 | 2,600 | 2,400 | 140 | 2,500 | 3,100 | 3,000 | 2,200 |
| 145 | 2,000 | 2,400 | 2,300 | 2,200 | 145 | 2,200 | 2,700 | 2,600 | 2,100 |
| 150 | 1,700 | 2,000 | 1,900 | 1,900 | 150 | 1,800 | 2,400 | 2,200 | 2,000 |
| 155 | 1,400 | 1,700 | 1,600 | 1,600 | 155 | 1,500 | 2,000 | 1,900 | 1,900 |
| 160 | 1,100 | 1,400 | 1,300 | 1,300 | 160 | 1,200 | 1,700 | 1,600 | 1,600 |
| 165 | 800 | 1,200 | 1,000 | 1,000 | 165 | 900 | 1,400 | 1,300 | 1,300 |
| 170 | | 900 | | | 170 | | 1,100 | 1,000 | 1,000 |

This information is not for crane operation. Operator must refer to the in-cab information for crane operation. Rated lifting capacities shown on fully extended outriggers do not exceed 85% of the tipping loads and on tires do not exceed 75% of the tipping loads.

| 19,200 lb Counterweight – Fully Extended Outriggers – 360° Rotation (All Capacities Are Listed In Pounds) | | | | | | | | | |
|--|-----------------|-------|-------|-------|---|-----------------|-------|-------|-------|
| 140 ft Main Boom Length 30° Fly Offset | | | | | 140 ft Main Boom Length 45° Fly Offset | | | | |
| Radius (ft) | Fly Length (ft) | | | | Radius (ft) | Fly Length (ft) | | | |
| | 35 | 58 | 74 | 90 | | 35 | 58 | 74 | 90 |
| 40 | | | | | 40 | | | | |
| 45 | | | | | 45 | | | | |
| 50 | | | | | 50 | | | | |
| 55 | 10,000 | | | | 55 | | | | |
| 60 | 9,800 | | | | 60 | | | | |
| 65 | 9,700 | | | | 65 | 8,800 | | | |
| 70 | 9,500 | | | | 70 | 8,800 | | | |
| 75 | 9,400 | 5,700 | 4,600 | | 75 | 8,700 | | | |
| 80 | 9,200 | 5,600 | 4,400 | 3,600 | 80 | 8,600 | | | |
| 85 | 9,100 | 5,500 | 4,200 | 3,400 | 85 | 8,600 | 4,900 | 3,700 | |
| 90 | 9,000 | 5,400 | 4,100 | 3,200 | 90 | 8,500 | 4,900 | 3,500 | 2,900 |
| 95 | 8,500 | 5,300 | 3,900 | 3,000 | 95 | 8,400 | 4,800 | 3,400 | 2,700 |
| 100 | 7,600 | 5,200 | 3,700 | 2,900 | 100 | 7,900 | 4,800 | 3,300 | 2,600 |
| 105 | 6,800 | 5,100 | 3,600 | 2,700 | 105 | 7,000 | 4,700 | 3,200 | 2,400 |
| 110 | 6,000 | 5,000 | 3,500 | 2,600 | 110 | 6,200 | 4,700 | 3,100 | 2,300 |
| 115 | 5,300 | 4,900 | 3,300 | 2,400 | 115 | 5,500 | 4,700 | 3,000 | 2,200 |
| 120 | 4,700 | 4,800 | 3,200 | 2,300 | 120 | 4,900 | 4,600 | 2,900 | 2,100 |
| 125 | 4,100 | 4,700 | 3,100 | 2,200 | 125 | 4,300 | 4,500 | 2,800 | 2,000 |
| 130 | 3,600 | 4,500 | 3,000 | 2,100 | 130 | 3,700 | 4,400 | 2,700 | 1,900 |
| 135 | 3,100 | 4,000 | 2,900 | 2,000 | 135 | 3,200 | 4,300 | 2,700 | 1,800 |
| 140 | 2,700 | 3,500 | 2,800 | 1,900 | 140 | | 3,700 | 2,600 | 1,800 |
| 145 | 2,300 | 3,100 | 2,800 | 1,800 | 145 | | 3,300 | 2,600 | 1,700 |
| 150 | 1,900 | 2,700 | 2,600 | 1,700 | 150 | | 2,800 | 2,500 | 1,600 |
| 155 | 1,500 | 2,300 | 2,200 | 1,700 | 155 | | 2,400 | 2,400 | 1,600 |
| 160 | | 1,900 | 1,900 | 1,600 | 160 | | 2,000 | 2,100 | 1,500 |
| 165 | | 1,600 | 1,500 | 1,500 | 165 | | | 1,700 | 1,500 |
| 170 | | 1,300 | 1,200 | 1,300 | 170 | | | 1,300 | 1,400 |
| 175 | | 900 | 900 | 1,000 | 175 | | | | 1,100 |

This information is not for crane operation. Operator must refer to the in-cab information for crane operation. Rated lifting capacities shown on fully extended outriggers do not exceed 85% of the tipping loads and on tires do not exceed 75% of the tipping loads.

| 28,800 lb Counterweight – Fully Extended Outriggers – 360° Rotation (All Capacities Are Listed In Pounds) | | | | | | | | | |
|--|-----------------|-------|-------|-------|---|-----------------|-------|-------|-------|
| 140 ft Main Boom Length 2° Fly Offset | | | | | 140 ft Main Boom Length 15° Fly Offset | | | | |
| Radius (ft) | Fly Length (ft) | | | | Radius (ft) | Fly Length (ft) | | | |
| | 35 | 58 | 74 | 90 | | 35 | 58 | 74 | 90 |
| 35 | 12,100 | | | | 35 | | | | |
| 40 | 12,100 | | | | 40 | | | | |
| 45 | 12,100 | 8,500 | | | 45 | 11,500 | | | |
| 50 | 12,100 | 8,400 | 6,600 | | 50 | 11,400 | | | |
| 55 | 12,100 | 8,300 | 6,600 | 5,200 | 55 | 11,200 | | | |
| 60 | 12,100 | 8,100 | 6,600 | 5,200 | 60 | 11,000 | 7,200 | | |
| 65 | 11,900 | 8,000 | 6,600 | 5,200 | 65 | 10,800 | 7,000 | 6,300 | |
| 70 | 11,700 | 7,800 | 6,600 | 5,200 | 70 | 10,600 | 6,800 | 6,000 | 4,800 |
| 75 | 11,500 | 7,700 | 6,600 | 5,100 | 75 | 10,400 | 6,700 | 5,700 | 4,500 |
| 80 | 11,300 | 7,500 | 6,400 | 4,800 | 80 | 10,200 | 6,500 | 5,400 | 4,200 |
| 85 | 11,000 | 7,300 | 6,000 | 4,500 | 85 | 10,000 | 6,300 | 5,100 | 4,000 |
| 90 | 10,500 | 7,100 | 5,700 | 4,200 | 90 | 9,700 | 6,200 | 4,900 | 3,700 |
| 95 | 10,000 | 6,900 | 5,400 | 4,000 | 95 | 9,400 | 6,000 | 4,600 | 3,500 |
| 100 | 9,000 | 6,700 | 5,100 | 3,700 | 100 | 9,000 | 5,900 | 4,400 | 3,300 |
| 105 | 8,100 | 6,500 | 4,900 | 3,500 | 105 | 8,500 | 5,700 | 4,200 | 3,100 |
| 110 | 7,300 | 6,300 | 4,700 | 3,300 | 110 | 7,700 | 5,600 | 4,100 | 3,000 |
| 115 | 6,600 | 6,000 | 4,500 | 3,200 | 115 | 7,000 | 5,500 | 3,900 | 2,800 |
| 120 | 6,000 | 5,800 | 4,300 | 3,000 | 120 | 6,300 | 5,300 | 3,700 | 2,700 |
| 125 | 5,400 | 5,600 | 4,100 | 2,800 | 125 | 5,700 | 5,100 | 3,600 | 2,500 |
| 130 | 4,800 | 5,300 | 3,900 | 2,700 | 130 | 5,100 | 4,900 | 3,500 | 2,400 |
| 135 | 4,400 | 4,800 | 3,800 | 2,500 | 135 | 4,600 | 4,700 | 3,300 | 2,300 |
| 140 | 3,900 | 4,300 | 3,600 | 2,400 | 140 | 4,100 | 4,600 | 3,200 | 2,200 |
| 145 | 3,500 | 3,900 | 3,500 | 2,300 | 145 | 3,700 | 4,200 | 3,100 | 2,100 |
| 150 | 3,100 | 3,500 | 3,400 | 2,200 | 150 | 3,300 | 3,800 | 3,000 | 2,000 |
| 155 | 2,700 | 3,100 | 3,000 | 2,100 | 155 | 2,900 | 3,400 | 2,900 | 1,900 |
| 160 | 2,400 | 2,800 | 2,600 | 2,000 | 160 | 2,500 | 3,100 | 2,800 | 1,800 |
| 165 | 2,100 | 2,500 | 2,300 | 1,900 | 165 | 2,200 | 2,700 | 2,600 | 1,700 |
| 170 | | 2,200 | 2,000 | 1,800 | 170 | | 2,400 | 2,300 | 1,600 |
| 175 | | 1,900 | 1,800 | 1,700 | 175 | | 2,100 | 2,000 | 1,600 |
| 180 | | 1,700 | 1,500 | 1,500 | 180 | | 1,800 | 1,700 | 1,500 |
| 185 | | 1,400 | 1,200 | 1,200 | 185 | | 1,500 | 1,400 | 1,400 |
| 190 | | 1,200 | 1,000 | 1,000 | 190 | | | 1,200 | 1,200 |
| 195 | | | | | 195 | | | 900 | 900 |

This information is not for crane operation. Operator must refer to the in-cab information for crane operation. Rated lifting capacities shown on fully extended outriggers do not exceed 85% of the tipping loads and on tires do not exceed 75% of the tipping loads.

| 28,800 lb Counterweight – Fully Extended Outriggers – 360° Rotation (All Capacities Are Listed In Pounds) | | | | | | | | | |
|--|-----------------|-------|-------|-------|---|-----------------|-------|-------|-------|
| 140 ft Main Boom Length 30° Fly Offset | | | | | 140 ft Main Boom Length 45° Fly Offset | | | | |
| Radius (ft) | Fly Length (ft) | | | | Radius (ft) | Fly Length (ft) | | | |
| | 35 | 58 | 74 | 90 | | 35 | 58 | 74 | 90 |
| 40 | | | | | 40 | | | | |
| 45 | | | | | 45 | | | | |
| 50 | | | | | 50 | | | | |
| 55 | 10,000 | | | | 55 | | | | |
| 60 | 9,800 | | | | 60 | | | | |
| 65 | 9,700 | | | | 65 | 8,800 | | | |
| 70 | 9,500 | | | | 70 | 8,800 | | | |
| 75 | 9,400 | 5,700 | 4,600 | | 75 | 8,700 | | | |
| 80 | 9,200 | 5,600 | 4,400 | 3,600 | 80 | 8,600 | | | |
| 85 | 9,100 | 5,500 | 4,200 | 3,400 | 85 | 8,600 | 4,900 | 3,700 | |
| 90 | 9,000 | 5,400 | 4,100 | 3,200 | 90 | 8,500 | 4,900 | 3,500 | 2,900 |
| 95 | 8,800 | 5,300 | 3,900 | 3,000 | 95 | 8,400 | 4,800 | 3,400 | 2,700 |
| 100 | 8,500 | 5,200 | 3,700 | 2,900 | 100 | 8,200 | 4,800 | 3,300 | 2,600 |
| 105 | 8,200 | 5,100 | 3,600 | 2,700 | 105 | 8,000 | 4,700 | 3,200 | 2,400 |
| 110 | 8,000 | 5,000 | 3,500 | 2,600 | 110 | 7,700 | 4,700 | 3,100 | 2,300 |
| 115 | 7,300 | 4,900 | 3,300 | 2,400 | 115 | 7,500 | 4,700 | 3,000 | 2,200 |
| 120 | 6,600 | 4,800 | 3,200 | 2,300 | 120 | 6,700 | 4,600 | 2,900 | 2,100 |
| 125 | 5,900 | 4,700 | 3,100 | 2,200 | 125 | 6,000 | 4,500 | 2,800 | 2,000 |
| 130 | 5,300 | 4,500 | 3,000 | 2,100 | 130 | 5,400 | 4,400 | 2,700 | 1,900 |
| 135 | 4,800 | 4,400 | 2,900 | 2,000 | 135 | 4,800 | 4,300 | 2,700 | 1,800 |
| 140 | 4,300 | 4,300 | 2,800 | 1,900 | 140 | | 4,200 | 2,600 | 1,800 |
| 145 | 3,800 | 4,200 | 2,800 | 1,800 | 145 | | 4,100 | 2,600 | 1,700 |
| 150 | 3,300 | 4,100 | 2,700 | 1,700 | 150 | | 4,000 | 2,500 | 1,600 |
| 155 | 2,900 | 3,700 | 2,600 | 1,700 | 155 | | 3,800 | 2,500 | 1,600 |
| 160 | | 3,300 | 2,600 | 1,600 | 160 | | 3,300 | 2,500 | 1,500 |
| 165 | | 2,900 | 2,500 | 1,500 | 165 | | 2,900 | 2,500 | 1,500 |
| 170 | | 2,500 | 2,500 | 1,500 | 170 | | | 2,500 | 1,400 |
| 175 | | 2,200 | 2,200 | 1,400 | 175 | | | 2,200 | 1,400 |
| 180 | | 1,800 | 1,800 | 1,400 | 180 | | | | 1,400 |
| 185 | | | 1,500 | 1,400 | 185 | | | | 1,400 |
| 190 | | | 1,300 | 1,300 | 190 | | | | 1,400 |
| 195 | | | 1,000 | 1,100 | 195 | | | | |

This information is not for crane operation. Operator must refer to the in-cab information for crane operation. Rated lifting capacities shown on fully extended outriggers do not exceed 85% of the tipping loads and on tires do not exceed 75% of the tipping loads.