





**Load Charts**  
Telescopic Boom

 13,3 m - 70,0 m (44 ft - 229.7 ft)

 7,8 m (25.6 ft)

 360°

 80 t (176,300 lb)



Feet	43.5	60.9	77.4	93.6	109.9	124.5	138.8	149.1	160.2	171.8	184.4	198.3	212.0	229.7	Feet	
8.0	600.0*														8.0	
9.0	382.0														9.0	
10.0	360.0	322.0	294.0												10.0	
15.0	284.0	284.0	254.0		220.0	139.0									15.0	
20.0	232.0	232.0	228.0		199.0	165.0	130.0	111.0							20.0	
25.0	195.0	196.0	192.0		176.0	154.0	129.0	111.0	97.0						25.0	
30.0	166.0	167.0	164.0		156.0	138.0	122.0	108.0	96.0	82.0	68.0	40.8			30.0	
35.0	40.8	144.0	141.0		140.0	124.0	113.0	102.0	91.0	80.0	68.0	57.0	47.0		35.0	
40.0		126.0	123.0		125.0	112.0	103.0	95.0	84.0	76.0	68.0	57.0	47.0	40.0	32.0	40.0
45.0		109.0	108.0		110.0	102.0	95.0	89.0	77.0	72.0	66.0	57.0	47.0	40.0	32.0	45.0
50.0		78.0	98.0		96.0	93.0	87.0	83.0	71.0	67.0	62.0	56.0	47.0	40.0	32.0	50.0
55.0			87.0		86.0	85.0	80.0	78.0	65.0	62.0	59.0	54.0	47.0	40.0	32.0	55.0
60.0			78.0		76.0	78.0	74.0	73.0	60.0	57.0	55.0	51.0	45.0	39.6	32.0	60.0
65.0			62.0		69.0	70.0	68.0	68.0	55.0	53.0	52.0	48.0	43.4	38.4	32.0	65.0
70.0					63.0	64.0	64.0	63.0	51.0	49.0	48.0	45.0	41.6	37.0	31.8	70.0
75.0					59.0	58.0	60.0	59.0	47.0	45.0	45.0	43.0	39.8	35.6	31.8	75.0
80.0					49.0	53.0	55.0	55.0	43.4	41.8	42.0	40.4	37.8	34.2	31.4	80.0
85.0					6.2	49.0	51.0	52.0	40.4	38.8	39.4	37.6	36.0	33.0	30.2	85.0
90.0						45.0	46.0	48.0	38.0	36.4	37.0	35.4	34.2	31.8	28.8	90.0
95.0						40.0	42.4	44.0	35.6	34.0	34.8	33.2	32.4	30.6	27.6	95.0
100.0						15.8	39.0	40.8	33.2	31.8	32.6	31.2	30.6	29.4	26.4	100.0
105.0							36.0	37.8	31.4	30.0	30.6	29.4	29.0	28.2	25.2	105.0
110.0							31.8	35.0	29.4	28.2	28.8	27.4	27.4	26.8	24.0	110.0
115.0							16.4	32.4	27.8	26.4	27.2	25.8	25.8	25.6	22.8	115.0
120.0								30.2	26.2	24.8	25.6	24.4	24.4	24.2	21.4	120.0
125.0								25.6	24.6	23.2	24.0	22.8	22.8	23.0	20.4	125.0
130.0								2.4	23.0	21.8	22.4	21.2	21.4	21.6	19.4	130.0
135.0									21.0	20.4	21.2	20.0	20.2	20.4	18.6	135.0
140.0									13.0	19.4	20.2	19.0	19.2	19.4	17.6	140.0
145.0										18.2	19.0	17.8	18.0	18.4	16.8	145.0
150.0										12.0	18.2	17.0	17.4	17.6	16.0	150.0
155.0											17.4	16.2	16.6	16.8	15.4	155.0
160.0											16.8	15.2	16.0	15.8	14.6	160.0
165.0											16.0	14.4	15.2	15.0	13.8	165.0
170.0												12.8	14.6	14.4	13.2	170.0
175.0												3.6	14.0	13.6	12.6	175.0
180.0													13.4	13.0	12.0	180.0
185.0													13.0	12.4	11.4	185.0
190.0													8.4	11.8	11.0	190.0
195.0														11.2	10.4	195.0
200.0														10.6	10.0	200.0
205.0														8.0	9.4	205.0
210.0															9.0	210.0
215.0															6.4	215.0

\* Over rear with special equipment



**Load Charts**  
Telescopic Boom

13,3 m - 70,0 m (44 ft - 229.7 ft)
 7,8 m (25.6 ft)
 360°
 70 t (154,300 lb)



Feet	43.5	60.9	77.4	93.6	109.9	124.5	138.8	149.1	160.2	171.8	184.4	198.3	212.0	229.7	Feet
9.0	378.0														9.0
10.0	358.0	322.0	294.0												10.0
15.0	282.0	280.0	254.0	220.0	139.0										15.0
20.0	230.0	230.0	226.0	199.0	165.0	130.0	110.0								20.0
25.0	192.0	193.0	190.0	176.0	154.0	129.0	111.0	97.0							25.0
30.0	163.0	164.0	161.0	156.0	138.0	122.0	108.0	96.0	82.0	68.0	40.8				30.0
35.0	40.8	141.0	138.0	140.0	124.0	113.0	102.0	91.0	80.0	68.0	57.0	47.0			35.0
40.0		122.0	119.0	121.0	112.0	103.0	95.0	84.0	76.0	68.0	57.0	47.0	40.0	32.0	40.0
45.0		106.0	106.0	104.0	102.0	95.0	89.0	77.0	72.0	66.0	57.0	47.0	40.0	32.0	45.0
50.0		78.0	93.0	91.0	93.0	87.0	83.0	71.0	67.0	62.0	56.0	47.0	40.0	32.0	50.0
55.0			82.0	81.0	83.0	80.0	78.0	65.0	62.0	59.0	54.0	47.0	40.0	32.0	55.0
60.0			74.0	73.0	74.0	74.0	73.0	60.0	57.0	55.0	51.0	45.0	39.6	32.0	60.0
65.0			62.0	67.0	66.0	67.0	68.0	55.0	53.0	52.0	48.0	43.4	38.4	32.0	65.0
70.0				61.0	59.0	61.0	61.0	51.0	49.0	48.0	45.0	41.6	37.0	31.8	70.0
75.0				55.0	53.0	55.0	56.0	47.0	45.0	45.0	43.0	39.8	35.6	31.8	75.0
80.0				49.0	50.0	49.0	51.0	43.4	41.8	42.0	40.4	37.8	34.2	31.4	80.0
85.0				6.2	47.0	45.0	47.0	40.4	38.8	39.4	37.6	36.0	33.0	30.2	85.0
90.0					42.6	41.8	42.6	38.0	36.4	37.0	35.4	34.2	31.8	28.8	90.0
95.0					38.6	39.6	39.0	35.6	34.0	34.8	33.2	32.4	30.6	27.6	95.0
100.0					23.2	37.4	35.8	33.2	31.8	32.6	31.2	30.6	29.4	26.4	100.0
105.0					6.0	34.8	33.0	31.4	30.0	30.6	29.4	29.0	28.2	25.2	105.0
110.0						29.2	30.2	29.0	28.2	28.8	27.4	27.4	26.8	24.0	110.0
115.0						16.4	27.8	26.6	26.4	27.2	25.8	25.8	25.6	22.8	115.0
120.0							25.6	24.4	24.2	25.6	24.4	24.4	24.2	21.4	120.0
125.0							23.6	22.4	22.2	23.8	22.8	22.8	23.0	20.4	125.0
130.0							2.4	20.6	20.4	22.0	21.2	21.4	21.6	19.4	130.0
135.0								19.0	18.6	20.2	19.4	20.2	20.4	18.6	135.0
140.0									17.2	19.2	18.0	19.0	19.4	17.6	140.0
145.0									15.6	18.4	16.4	18.0	18.4	16.8	145.0
150.0									12.0	18.0	15.4	17.4	17.6	16.0	150.0
155.0									11.6	17.4	14.8	16.6	16.4	15.4	155.0
160.0										16.4	14.2	15.8	15.2	14.6	160.0
165.0										15.2	13.4	14.6	14.2	13.8	165.0
170.0											12.8	13.6	13.0	12.6	170.0
175.0												3.6	12.8	12.2	175.0
180.0													11.8	11.8	180.0
185.0													11.0	11.2	185.0
190.0													8.4	10.4	190.0
195.0														9.6	195.0
200.0														8.8	200.0
205.0														7.4	205.0
210.0														6.4	210.0



**Working Range**



13,3 m - 70,0 m (44 ft - 229.7 ft)



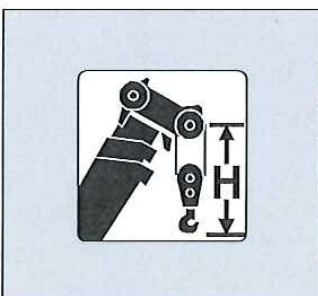
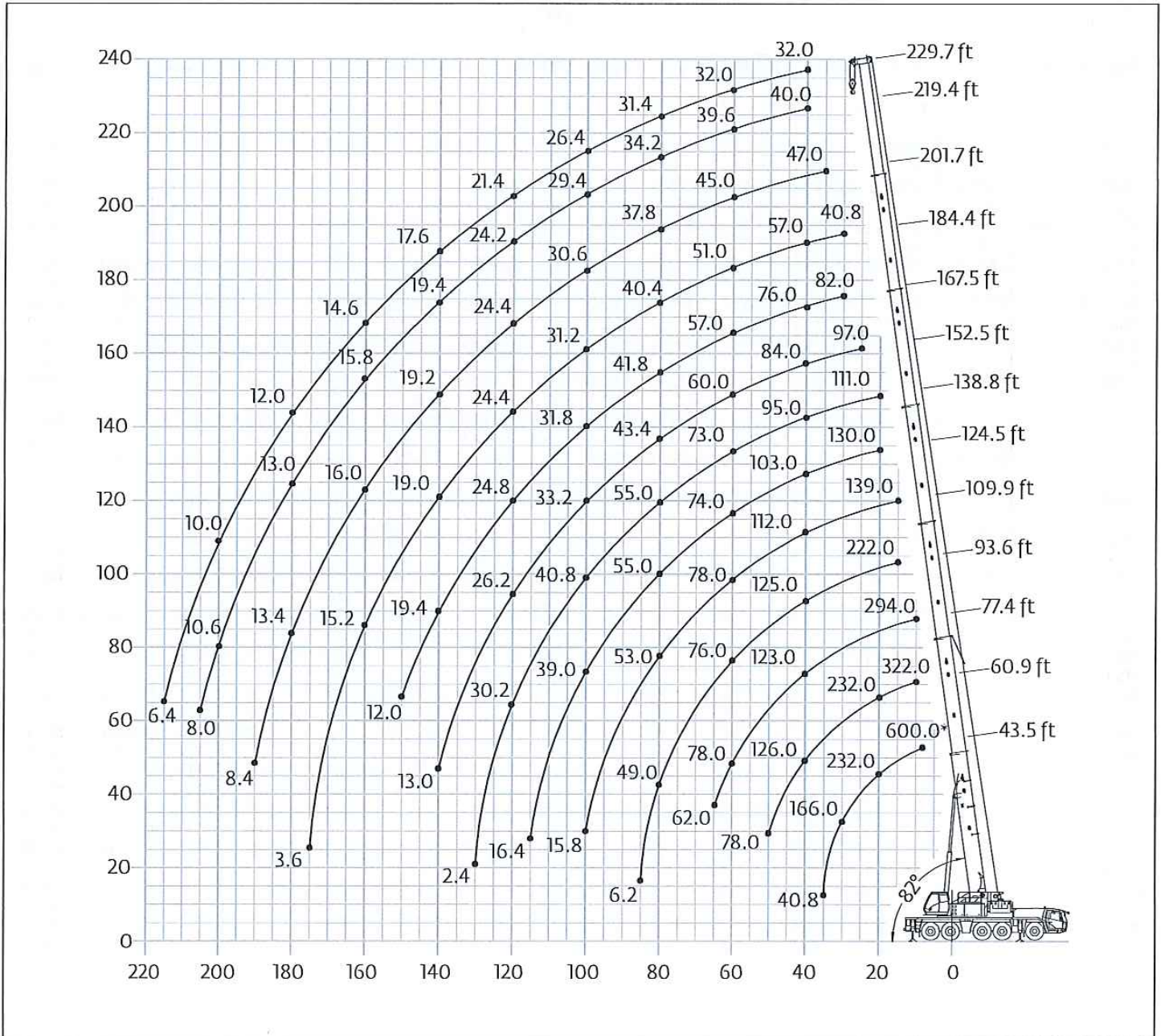
7,8 m (25.6 ft)



360°



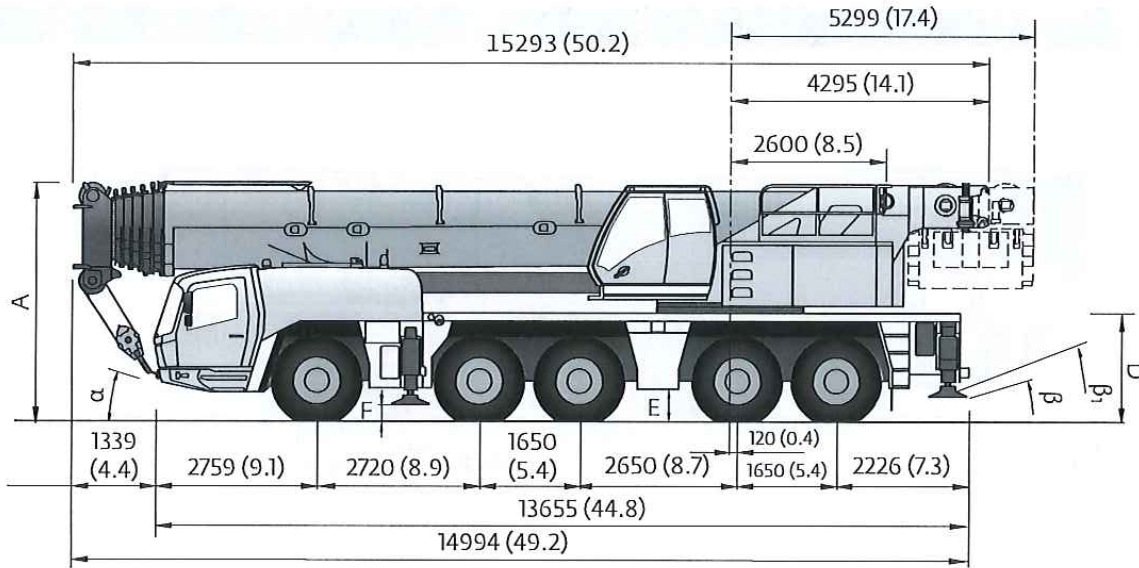
80 t (176,300 lb)



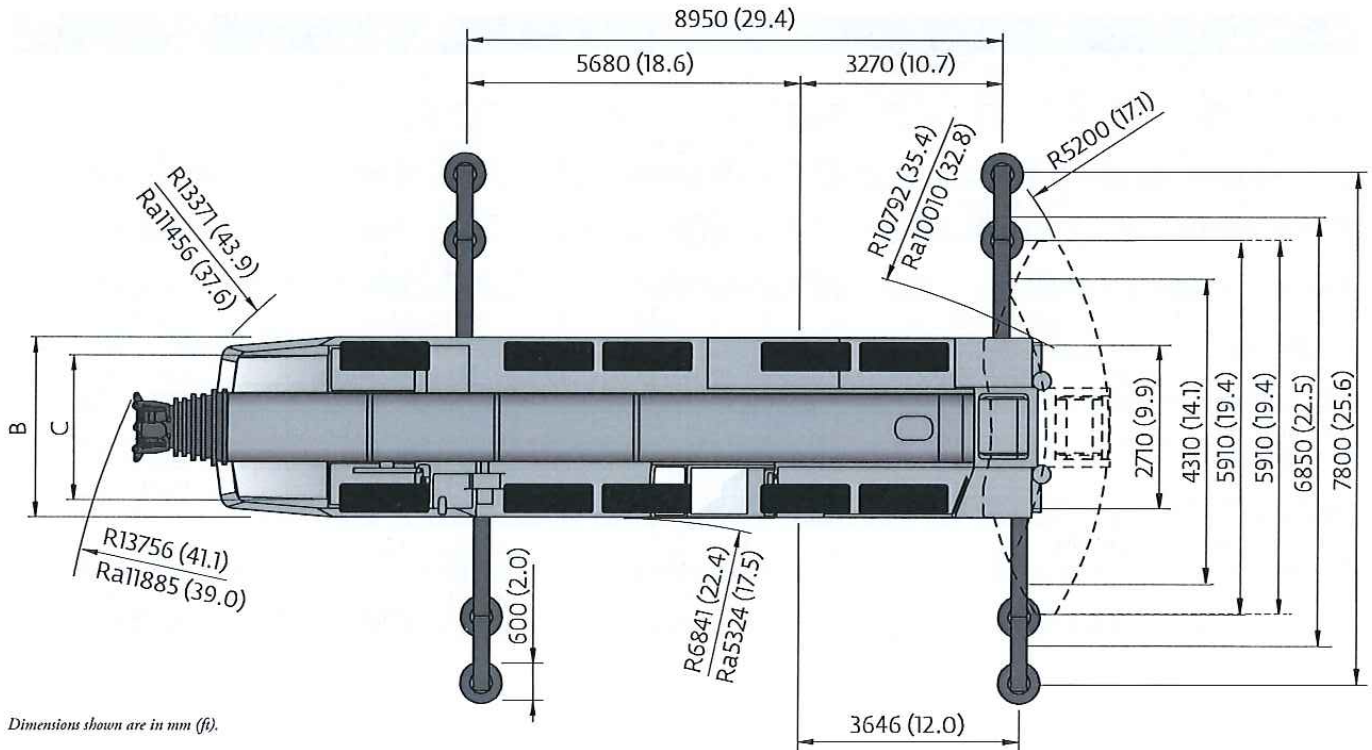
Hook block (t)	H
200 D	3800 mm (12.5 ft)
160 D	3650 mm (12.0 ft)
125 D	3600 mm (11.8 ft)
80 E/D	3600 mm (11.8 ft)
32 E	3400 mm (11.2 ft)
12 H/B	2800 mm (9.2 ft)



**Dimensions**



Dimensions shown are in mm (ft).



Dimensions shown are in mm (ft).

Ra = Radius all wheels steered

	A	A 130 mm**	B	C	D	E	F	α	β	β <sub>1</sub>
385/95 R25	3950 (13.0)	3820 (12.5)	3000 (9.8)	2570 (8.4)	1822 (6.0)	486 (1.6)	228 (0.8)	14	8	6
445/95 R25	4000 (13.1)	3870 (12.7)	3000 (9.8)	2510 (8.2)	1872 (6.1)	536 (1.8)	278 (0.9)	16	10	8
525/80 R25	4000 (13.1)	3870 (12.7)	3100 (10.2)	2530 (8.3)	1872 (6.1)	536 (1.8)	278 (0.9)	16	10	8

\*\* Lowered