

Courtesy of



CROFTON
INDUSTRIES

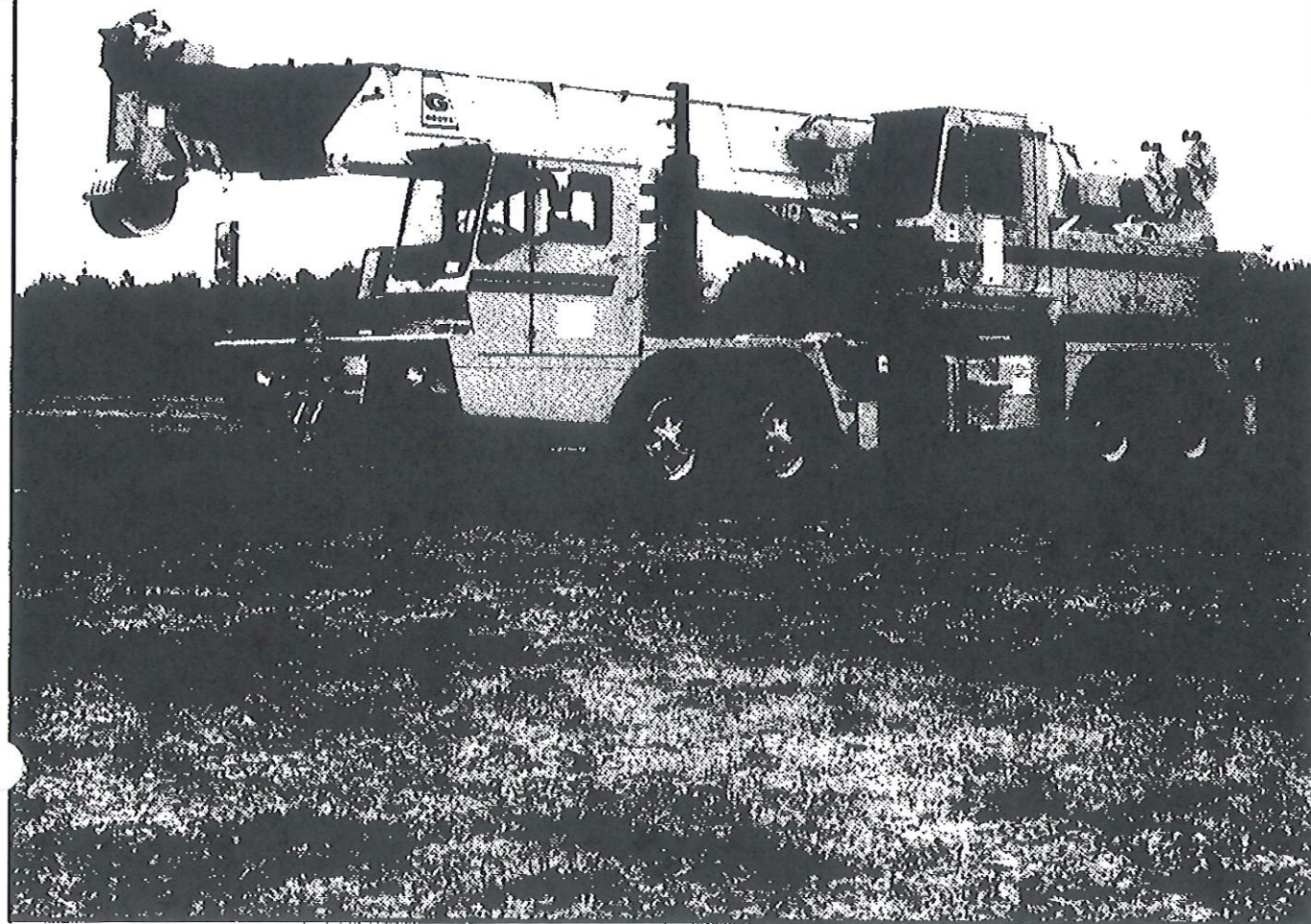


GROVE[®]
worldwide

TMS300B

Truck-mounted hydraulic crane

- Capacity 40 tons (37,500 kg)
- Standard fifth jack for 360° duties
- Maximum on-board tip height 164 ft. (50m)
- Optional 32 ft. - 56 ft. (9.8-17m) telescopic swingaway offsets 0°, 15° and 30°



TMS300B

40 TON CAPACITY
34 ft. - 136 ft. BOOM

(POWER PINNED)
85% OF TIPPING

32 FT. OFFSETTABLE EXTENSION (360° w/FIFTH FRONT JACK)

Main Boom Angle (Deg.)	0° OFFSET		15° OFFSET		30° OFFSET	
	Rad. Ref. ft.	Cap. lbs.	Rad. Ref. ft.	Cap. lbs.	Rad. Ref. ft.	Cap. lbs.
POWER PINNED FLY RETRACTED						
75	28.4	18,200	34.4	10,300	38.6	6,900
70	37.4	14,900	43.2	9,600	47.2	6,400
65	46.1	10,500	51.7	8,000	55.5	6,100
60	54.5	6,990	59.7	5,380	63.4	4,440
55	62.4	4,670	67.3	3,560	70.7	2,890
50	69.8	3,040	74.3	2,240	77.5	1,750
45	76.7	1,850	80.7	1,260		
POWER PINNED FLY EXTENDED						
75	37.6	11,000	43.8	8,500	47.6	6,400
70	48.6	9,200	54.4	7,500	58.1	5,900
65	59.3	6,220	64.7	4,620	68.2	3,760
60	69.5	3,450	74.5	2,410	77.7	1,820
55	79.2	1,660				

A6-829-002514 & -002518

CAPACITIES FOR 32 FT. - 56 FT. TELE. OFFSETTABLE EXTENSION (360° w/FIFTH FRONT JACK)

Main Boom Angle	32 ft. LENGTH						44 ft. LENGTH						56 ft. LENGTH					
	0° OFFSET	15° OFFSET	30° OFFSET	0° OFFSET	15° OFFSET	30° OFFSET	0° OFFSET	15° OFFSET	30° OFFSET	0° OFFSET	15° OFFSET	30° OFFSET	0° OFFSET	15° OFFSET	30° OFFSET	0° OFFSET	15° OFFSET	30° OFFSET
	Rad. Ref. (ft.)	Cap. lbs.	Rad. Ref. (ft.)	Cap. lbs.	Rad. Ref. (ft.)	Cap. lbs.	Rad. Ref. (ft.)	Cap. lbs.	Rad. Ref. (ft.)	Cap. lbs.	Rad. Ref. (ft.)	Cap. lbs.	Rad. Ref. (ft.)	Cap. lbs.	Rad. Ref. (ft.)	Cap. lbs.	Rad. Ref. (ft.)	Cap. lbs.
POWER PINNED FLY RETRACTED																		
75°	28.4	17,500	34.4	9,600	38.6	6,500	33.1	11,700	42.1	6,400	49.7	4,500	36.3	8,900	48.9	4,800	59.5	3,200
70	37.4	14,200	43.2	8,300	47.2	5,800	43.3	9,400	52.0	5,200	59.1	3,900	47.8	7,100	59.6	4,200	69.4	2,800
65	46.1	10,050	51.7	7,300	55.5	5,400	53.3	7,700	61.6	4,800	68.0	3,700	59.0	5,700	70.0	3,600	78.7	2,600
60	54.5	6,530	59.7	4,900	63.4	3,950	62.9	5,260	70.6	3,660	76.4	2,710	69.7	4,420	79.8	2,870	87.4	1,950
55	62.4	4,200	67.3	3,080	70.7	2,400	72.0	3,420	79.2	2,300	84.2	1,660	79.9	2,830	89.0	1,790	95.5	1,160
50	69.8	2,560	74.3	1,760	77.5	1,260	80.5	2,120	87.1	1,310			89.5	1,730				
45	76.7	1,370					88.5	1,160										
POWER PINNED FLY EXTENDED																		
75°	37.6	10,300	43.8	7,800	47.6	6,000	42.6	8,700	52.6	5,800	59.6	4,200	48.3	7,500	60.0	4,400	69.1	3,000
70	48.6	7,500	54.4	6,800	58.1	5,300	54.9	7,100	64.3	5,200	70.8	3,900	61.4	5,900	72.4	3,800	80.8	2,700
65	59.3	5,730	64.7	4,120	68.2	3,250	66.9	5,040	75.5	3,370	81.5	2,440	74.0	4,310	84.2	2,830	91.9	1,960
60	69.5	2,950	74.5	1,910	77.7	1,310	78.4	2,900	86.1	1,810	91.5	1,180	86.1	2,600	95.5	1,600	102.3	1,010
55	79.2	1,060																

A6-829-008500 & -008504

NOTES FOR LIFTING WITH 32 FT. OR 32 FT.-56 FT. OFFSETTABLE EXTENSIONS

- All capacities above the bold line are based on structural strength of boom extension and do not exceed 85% of tipping load, in accordance with SAE J-765 OCT80.
- 32 ft., 44 ft., & 56 ft. boom extension lengths maybe used for double or single line lifting service. Double line lifting service is required when the unit is equipped with a Krueger L.M.I.
- Rated load is based on loaded main boom angle with reference to horizontal, regardless of main boom length. (Ref. radius is for fully extended boom and power pinned fly extended 104 ft. boom length or power pinned fly retracted 81 ft. boom length, whichever the case may be)
WARNING: Operation of this machine with heavier loads than the capacities listed is strictly prohibited. Machine tipping with boom extension occurs rapidly and without advance warning.
- WARNING:** The Krueger L.M.I. will not compensate for reeving/ rigging accessories on the main boom nose or auxiliary boom nose when programmed to monitor the boom extension. Remove all reeving/ rigging accessories from main boom when using boom extension.
- Capacities listed are with fully extended outriggers only.
- *BOOM EXTENSION WARNING FOR POWER PINNED FLY EXTENDED:**
 *Warning for 32 ft. Boom Extension: For main boom length greater than 68 ft. with 32 ft. tele. offsettable or offsettable boom extension in working position, the boom angle must not be less than 50° since loss of stability will occur causing a tipping condition. The boom angle is not restricted for main boom length equal to or less than 68 ft.
 *Warning for 44 ft. & 56 ft. Boom Extension: For main boom length greater than 68 ft. with 44 ft. or 56 ft. tele. boom extension in working position, the boom angle must not be less than 53° since loss of stability will occur causing a tipping condition. The boom angle is not restricted for main length equal to or less than 68 ft.
- *BOOM EXTENSION WARNING FOR POWER PINNED FLY RETRACTED:**
 *Warning for 32 ft. Boom Extension: For main boom length greater than 62 ft. with 32 ft. tele. offsettable or offsettable boom extension in working position, the boom angle must not be less than 40° since loss of stability will occur causing a tipping condition. The boom angle is not restricted for main boom length equal to or less than 62 ft.
 *Warning for 44 ft. & 56 ft. Boom Extension: For main boom length greater than 56 ft. with 44 ft. or 56 ft. tele. boom extension in working position, the boom angle must not be less than 44° since loss of stability will occur causing a tipping condition. The boom angle is not restricted for main length equal to or less than 56 ft.

300B

CAPACITY
6 ft. BOOM

(PINNED)
TIPPING

GROVE

FULL HYDRAULIC CARRIER-MOUNTED CRANE

CAPACITIES IN POUNDS

ON OUTRIGGERS FULLY EXTENDED - OVER REAR

Radius in Feet	Main Boom Length in Feet (Power Pinned Fly Retracted)									PowerPin Fly & 81 ft.	32 ft. Ext. & 81 ft.	32 ft. Ext. & 104 ft.
	34	38	44	50	56	62	68	74	81			
10	80,000 (69)	68,000 (71.5)	64,000 (74.5)	60,000 (76.5)						See Warning Note 4	See Warning Note 5	See Warning Note 6
12	65,000 (65)	62,500 (68)	57,500 (71.5)	54,000 (74)	51,000 (76)	49,000 (77.5)						
15	57,000 (59.5)	55,000 (63)	50,000 (67.5)	46,500 (70.5)	43,900 (73)	41,900 (74.5)	40,000 (76.5)	38,600 (77.5)				
20	47,000 (48.5)	43,000 (54)	39,500 (60)	36,500 (64)	34,500 (67.5)	32,700 (70)	31,400 (72)	30,000 (73.5)	28,700 (76)			
25	35,675 (35.5)	33,300 (44)	31,000 (52)	30,000 (57.5)	28,100 (61.5)	26,500 (65)	25,300 (67.5)	24,200 (69.5)	23,100 (72)	20,000 (77)	17,500 (77.5)	
30	25,200 (14)	25,200 (31)	25,200 (43)	25,200 (50)	23,500 (55.5)	22,100 (59.5)	21,000 (62.5)	20,000 (65.5)	19,000 (68)	17,750 (74.5)	15,400 (75.5)	
35			19,340 (31.5)	19,340 (42)	19,340 (49)	18,700 (54)	17,700 (57.5)	16,800 (61)	16,000 (64.5)	15,600 (71.5)	13,700 (73)	9,600 (77.5)
40			15,190 (13.5)	15,190 (32)	15,190 (41.5)	15,190 (47.5)	15,190 (52.5)	14,400 (56.5)	13,600 (60)	13,100 (68.5)	12,200 (70.5)	8,750 (75.5)
45				12,310 (18)	12,310 (32.5)	12,310 (41)	12,310 (47)	12,310 (51.5)	11,700 (56)	11,300 (65.5)	10,800 (67.5)	7,900 (73)
50					10,000 (20.5)	10,000 (33)	10,000 (40.5)	10,000 (46)	10,000 (51.5)	9,930 (62)	9,410 (64.5)	7,050 (71)
55						8,180 (22.5)	8,180 (33)	8,180 (40)	8,180 (46.5)	8,710 (59)	8,230 (61.5)	6,350 (68.5)
60							6,650 (24)	6,650 (33.5)	6,650 (41)	7,680 (55.5)	7,240 (58.5)	5,800 (66)
65							5,280 (3)	5,280 (25)	5,280 (35)	6,800 (52)	6,380 (55.5)	5,200 (63.5)
70								4,140 (11.5)	4,140 (27.5)	5,990 (48)	5,640 (52.5)	4,750 (61.5)
75									3,320 (17)	5,000 (44)	4,910 (49)	4,350 (58.5)
80										4,060 (40)	4,090 (45)	4,050 (56)
85										3,290 (35)	3,420 (41)	3,700 (53.5)
90										2,730 (29.5)	2,830 (37)	3,280 (50.5)
95										2,210 (22.5)	2,330 (32)	2,870 (47.5)
100										1,680 (10.5)	1,890 (26.5)	2,470 (44.5)
105											1,470 (19)	2,080 (41)
110												1,700 (37.5)
115												1,340 (33.5)
120												1,010 (29)

NOTE: Boom angles are in degrees.

A6-829-006309A & -002137D

CAPACITIES

Capacity. Rated
by suspended
standing on a
th outriggers
ned to their
free of crane
lifting loads.
istance from
he centerline
s with loads

ation, weight
80% of rated

ns must be

telescoped is
angle, boom
to telescope
ting capacity

imum of 12
nen lowering

s is between
for the next

OUTRIGGERS

should not be relied upon as a capacity limitation. Capacities do not exceed 85% of
crane load stability test code - SAE J-765

secter lifting rated load.

e determined by boom angle only in the column headed by 104 ft. boom. For boom

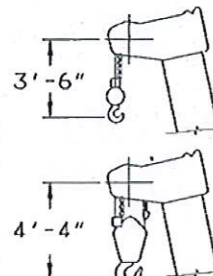
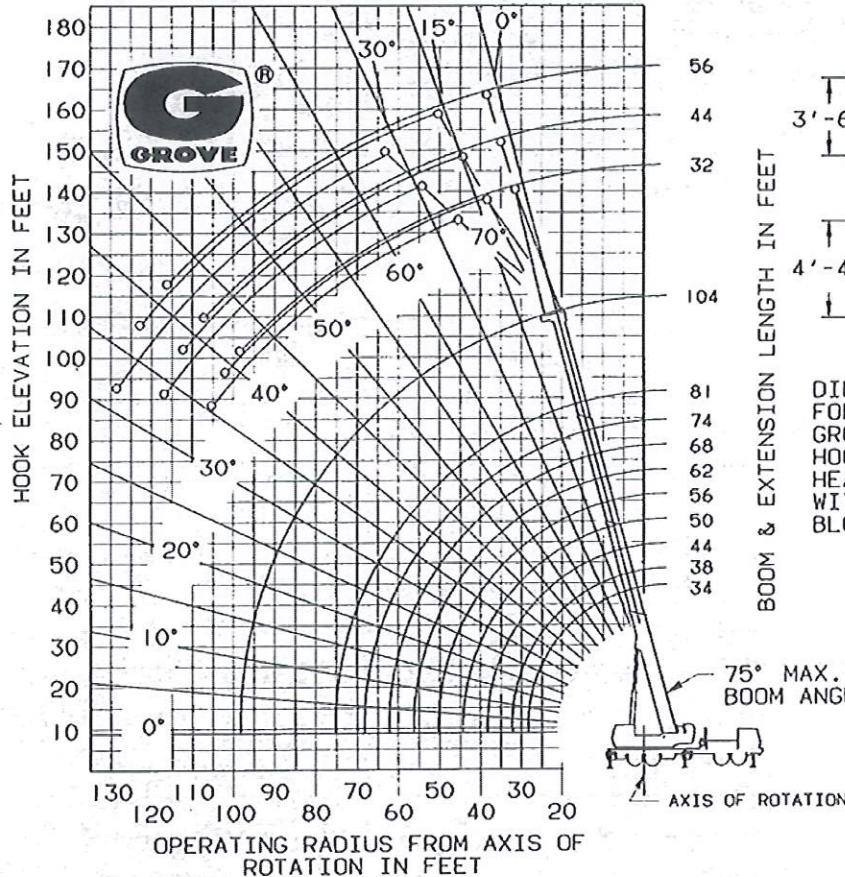
erected, the rated loads are determined by boom angle only in the column headed

erected, the rated loads are determined by boom angle only in the column headed

GROVE® TMS300B

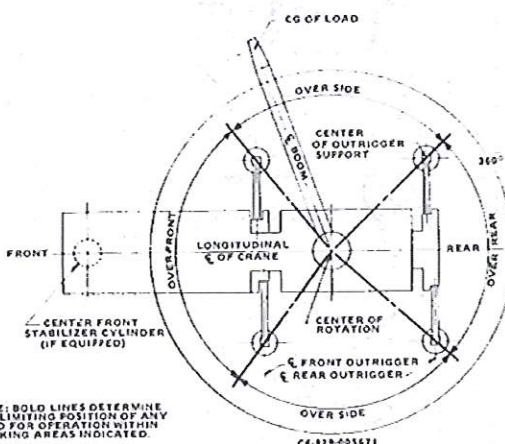
RANGE DIAGRAM

D6-829-008519



DIMENSIONS ARE FOR LARGEST GROVE FURNISHED HOOK BLOCK AND HEADACHE BALL, WITH ANTI-TWO BLOCK ACTIVATED.

LIFTING AREA DIAGRAM



WEIGHT REDUCTIONS

32 ft. FIXED EXT.	
†Stowed	703 lbs.
†Erected	6,015 lbs.

32 ft. • 56 ft. TELE. EXT.	
†Stowed	916 lbs.
†Erected (Retracted)	7,631 lbs.
†Erected (Extended)	9,944 lbs.
†Red. of main boom capacities.	

When lifting over swingaway and/or jib combination, deduct total weight of all load handling devices reeved over main boom nose directly from swingaway or jib capacity.

HOOKBLOCKS:	
40 Ton, 3 Sheave	640 lbs.
Auxiliary Boom Head	190 lbs.
10 Ton Headache Ball	560 lbs.

NOTE: All Load Handling Devices and Boom Attachments are Considered Part of the Load and Suitable Allowances MUST BE MADE FOR THEIR COMBINED WEIGHTS. Weights are for Grove Furnished Equipment.

NOTES FOR LIFTING CAPACITIES

1. Do not exceed any rated lifting capacity. Rated lifting capacities are based on freely suspended loads with the machine leveled and standing on a firm supporting surface. Ratings with outriggers are based on outriggers being extended to their maximum position and tires raised free of crane weight before extending the boom or lifting loads.
2. Operating radius is the horizontal distance from the axis of rotation before loading to the centerline of the vertical hoist line or tackle with loads applied.
3. For clamshell or concrete bucket operation, weight of bucket and load must not exceed 80% of rated lifting capacities.
4. Power-telescoping boom sections must be extended equally at all times.
5. The maximum load which may be telescoped is limited by hydraulic pressure, boom angle, boom lubrication, etc. It is safe to attempt to telescope any load within the limits of rated lifting capacity chart.
6. Keep load handling devices a minimum of 12 inches (30 cm) below boom head when lowering or extending boom.
7. If actual boom length and/or radius is between values listed, use lifting capacity for the next longer rated length and/or radius.



GROVE MANUFACTURING COMPANY

Division of Kilde, Inc.

KILDE

Box 21, Shady Grove, Pennsylvania 17256

Phone: (717) 597-8121 Telex: 842308 Cable: GROVE MFG

Distributed by:



TMS300B

40 TON CAPACITY
34 ft. - 136 ft. BOOM

(POWER PINNED)
85% OF TIPPING

RATED LIFTING CAPACITIES I

ON OUTRIGGERS FULLY EXTENDED - OVER SIDE

Radius in Feet	Main Boom Length in Feet (Power Pinned Fly Retracted)										Power Pin. Fly & 81 ft.	32 ft. Ext. & 81 ft.	32 ft. Ext. & 104 ft.
	*34	38	44	50	56	62	68	74	81		104	113	136
10	80,000 (69)	68,000 (71.5)	64,000 (74.5)	60,000 (76.5)							See Warning Note 4	See Warning Note 5	See Warning Note 6
12	65,000 (65)	62,500 (68)	57,500 (71.5)	54,000 (74)	51,000 (76)	49,000 (77.5)							
15	57,000 (59.5)	55,000 (63)	50,000 (67.5)	46,500 (70.5)	43,900 (73)	41,900 (74.5)	40,000 (76.5)	38,600 (77.5)					
20	46,890 (48.5)	43,000 (54)	39,500 (60)	36,500 (64)	34,500 (67.5)	32,700 (70)	31,400 (72)	30,000 (73.5)	28,700 (76)				
25	29,450 (35.5)	29,450 (44)	29,450 (52)	29,450 (57.5)	28,100 (61.5)	26,500 (65)	25,300 (67.5)	24,200 (69.5)	23,100 (72)	20,000 (77)	17,500 (77.5)		
30	20,560 (14)	20,560 (31)	20,560 (43)	20,560 (50)	20,560 (55.5)	20,560 (59.5)	20,560 (62.5)	20,000 (65.5)	19,000 (68)	17,750 (74.5)	15,400 (75.5)		
35			15,450 (31.5)	15,450 (42)	15,450 (49)	15,450 (54)	15,450 (57.5)	15,450 (61)	15,450 (64.5)	15,600 (71.5)	13,700 (73)	9,600 (77.5)	
40			11,410 (13.5)	11,410 (32)	11,410 (41.5)	11,410 (47.5)	11,410 (52.5)	11,410 (56.5)	11,410 (60)	13,100 (68.5)	12,200 (70.5)	8,750 (75.5)	
45				8,450 (18)	8,450 (32.5)	8,450 (41)	8,450 (47)	8,450 (51.5)	8,450 (56)	10,990 (65.5)	10,800 (67.5)	7,900 (73)	
50					6,630 (20.5)	6,630 (33)	6,630 (40.5)	6,630 (46)	6,630 (51.5)	8,750 (62)	8,970 (64.5)	7,050 (71)	
55						5,280 (22.5)	5,280 (33)	5,280 (40)	5,280 (46.5)	7,130 (59)	7,300 (61.5)	6,350 (68.5)	
60							4,090 (24)	4,090 (33.5)	4,090 (41)	5,650 (55.5)	5,890 (58.5)	5,800 (66)	
65								3,060 (3)	3,060 (25)	4,500 (35)	4,760 (52)	5,190 (55.5)	
70									2,150 (11.5)	3,600 (27.5)	3,780 (48)	4,440 (52.5)	
75										1,300 (17)	2,840 (44)	3,690 (49)	
80											2,150 (40)	2,950 (45)	
85											1,550 (35)	2,370 (41)	
90											1,020 (29.5)	1,930 (37)	
95												1,530 (47.5)	
100												1,130 (44.5)	

NOTE: Boom angles are in degrees.

A6-829-006311 & -002137D

Radius in Feet	*34	38
10	80,000 (69)	68,000 (71.5)
12	65,000 (65)	62,500 (68)
15	57,000 (59.5)	55,000 (63)
20	47,000 (48.5)	43,000 (54)
25	35,675 (35.5)	33,300 (44)
30	25,200 (14)	25,200 (31)
35		
40		
45		
50		
55		
60		
65		
70		
75		
80		
85		
90		
95		
100		
105		
110		
115		
120		

NOTE: Boom angles are in

NOTES FOR ON OUTRIGGERS

- Capacities appearing above the bold line are based on structural strength and tipping should not be relied upon as a cap tipping loads as determined by test in accordance with SAE recommended practice crane load stability test code - S4
- Boom angle is the included angle between horizontal and the axis of the boom base section after lifting rated load.
- For boom lengths less than 104 ft. with power pinned fly extended, the rated loads are determined by boom angle only angles not shown, use rating of next lower boom angle.
- For boom lengths less than 113 ft. with power pinned fly retracted and 32 ft. boom ext. erected, the rated loads are determined by 113 ft. boom. For boom angles not shown, use rating of next lower boom angles
- For boom lengths less than 136 ft. with power pinned fly extended and 32 ft. boom ext. erected, the rated loads are determined by 136 ft. boom. For boom angles not shown, use rating of next lower boom angle.

Superstructure specifications

Boom	34 ft. to 104 ft. (10.4m - 31.7m) four section Trapezoidal† power pinned boom. Telescopic sections slide on adjustable and replaceable nylatron pads. Maximum tip height: 109 ft. (33.2m).
Swingaway Extension	32 ft. (9.8m) lattice swingaway boom extension stows alongside base boom section when not in use. Maximum tip height: 140 ft. (42.7m).
*Optional Telescopic Swingaway	32 ft. to 56 ft. (9.8m-17m) telescopic lattice swingaway extension with offset links, offsettable at 0°, 15° or 30°. Stows alongside base boom when not in use. Maximum tip height: 164 ft. (50.0m).
*Optional Offsettable Swingaway	32 ft. (9.8m) lattice swingaway. Boom extension stows alongside base boom section when not in use. Offsettable at 0°, 15° or 30°. Maximum tip height: 140 ft. (42.7m).
Boom Nose	Four sheaves mounted on heavy duty tapered roller bearings with removable pin-type rope guards. *Optional removable auxiliary boom nose with removable pin type rope guard.
Boom Elevation	Two double acting hydraulic cylinders with integral holding valve provides elevation from -3° to 76°.
Load Moment & Anti-Two Block System	Standard load moment and anti-two block system with audio-visual warning and control lever lockout. These systems provide electronic display of boom angle, length, radius, tip height, relative load moment, maximum permissible load, load indication and warning of impending two-block conditions.
Cab	Full vision, all steel fabricated with acoustical lining and tinted safety glass throughout. Dash panel incorporates gauges for all engine functions. Other standard features include: hinged skylight, sliding left side door and sliding right side window, electric windshield wash-wipe, circulating air fan, heater, swing horn, fire extinguisher, seat belt. *Optional items: electric skylight wiper and air conditioning (Special Order).
Swing	Ball bearing swing circle with 360° continuous rotation. Grove "glide swing" with foot actuated disc brake, spring applied hydraulically released park brake and 360° positive turntable lock. Combination controls provided for hand or foot operation. Swing speed 2.6 RPM.
Counterweight	Fixed position pinned to turntable. Weight varies depending on hoist configuration.

HYDRAULIC SYSTEM

Pumps	Four main gear pumps powered by carrier engine. Manual pump disconnect. Combined capacity 146 GPM (553 LPM).
Valves	Precision four way double acting control valves, 4 individual valve banks permit simultaneous control of multiple crane functions.
Filter	Return line type, full flow with by-pass protection and filter by-pass indicator, replaceable cartridge, 15/30/38 filtration rating.
Reservoir	127 gallons (481 L) with spin-on breather filter, external sight gauge, clean out access, strap mounted to frame.
Oil Cooler	Full flow, fin and tube, oil to air.

HOIST SPECIFICATIONS

Series parallel circuitry and two motors provide both high line pull and speed ranges. Power up and down, equal speed, planetary reduction with integral automatic brake and electronic hoist drum rotation indicator.

		Main Hoist HO30B-16 or *Auxiliary Hoist HO30B-16	
Make/Model		High Range	Low Range
Maximum single line speed	Bottom layer	396 FPM (121m/min)	198 FPM (60 m/min)
	Intermediate layer	460 FPM (140m/min)	230 FPM (70 m/min)
	Top layer	526 FPM (160m/min)	263 FPM (80 m/min)
Maximum single line pull	Bottom layer	8,161 lbs. (3701 kg)	16,322 lbs. (7404 kg)
	Intermediate layer	7,028 lbs. (3188 kg)	14,056 lbs. (6376 kg)
	Top layer	6,172 lbs. (2799 kg)	12,344 lbs. (5599 kg)
Maximum permissible line pull w/5:1 Strength Factor		12,920 lbs. (5861 kg) w/std. wire rope	
Maximum rope stowage		Main/Aux. 508 ft. of 3/4" dia. rope (155m of 19mm)	
Note: 500 ft. (152m of 19mm) supplied with basic unit for main hoist.			

†Patented Grove feature or patent pending
*Denotes optional equipment



Carrier specifications

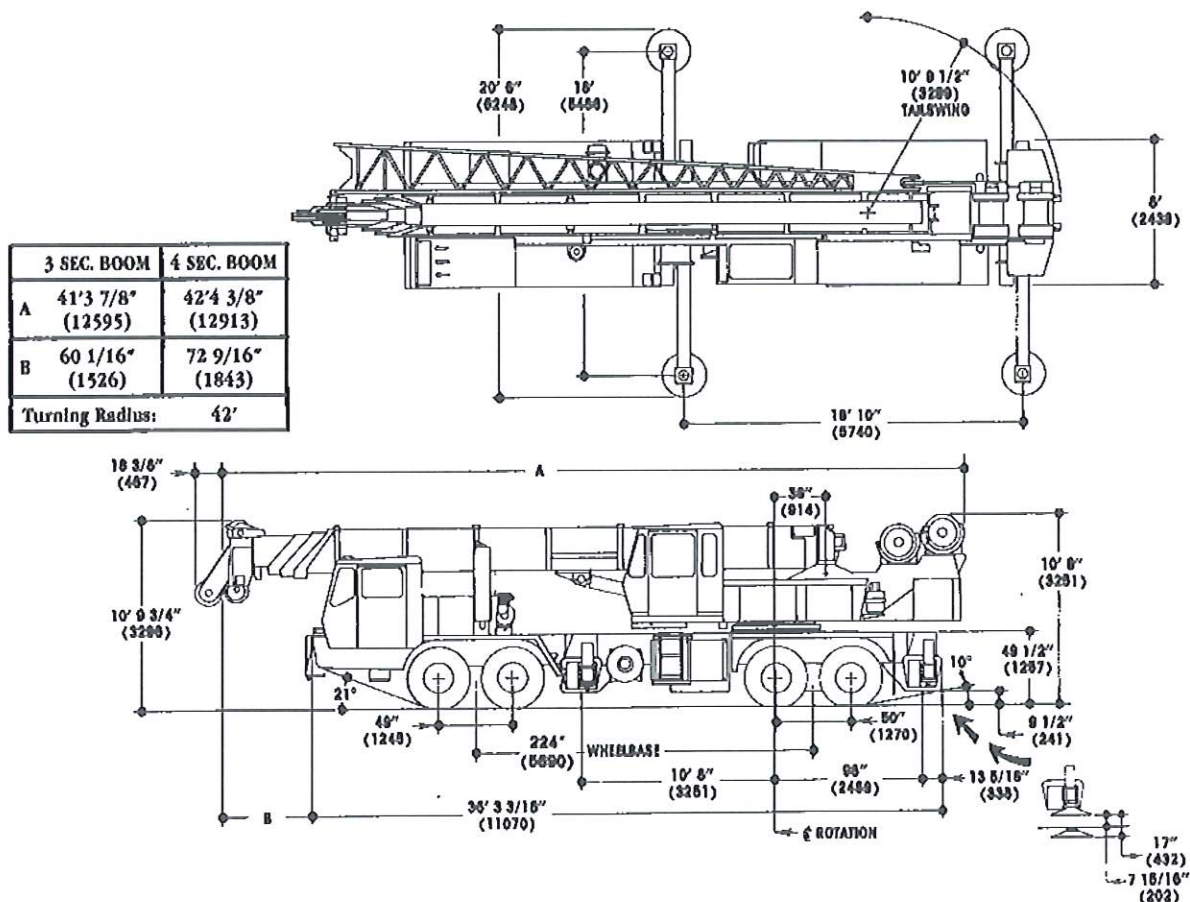
Frame	High strength alloy steel all welded box-type construction with integral outrigger boxes and front/rear lifting, towing and tie down lugs.	
Outrigger System	Hydraulic single stage double box telescopic beam and jack outriggers with integral holding valves. All steel fabricated quick release type outrigger floats 24" (610mm) diameter. Standard fifth front stabilizer for 360° duties.	
Outrigger Controls	Located in superstructure cab. Push button controls requiring two-handed operation for safety. Crane level indicator (sight bubble) adjacent to controls.	
Engine	Detroit diesel 6-71N six cylinder, naturally aspirated water cooled diesel, 426 cu. in. (7 L) 230 bhp (172 kw) (Gross) @ 2100 RPM. Maximum torque 611 ft. lbs. (84.5 kg/m) @ 1600 RPM.	
Fuel Tank Capacity	(1) 90 gallon (341 L)	
Electrical System	Four 12 volt - maintenance free batteries, 24 volt starting.	
Drive	8 x 4	
Steering	Front axle steering, cam and lever type with hydraulic assist.	
Transmission	Manual with 13 speeds forward and 3 reverse.	
Axles	Front:	Rockwell beam type steer axles.
	Rear:	Rockwell SSHD drive tandem, with inter-axle differential and dash mounted control.
Suspension	Front axles (1 & 2) spring mounted tandem. Rear axles (3 & 4) solid mount tandem with equalizing beam and solid steel saddles.	
Tires	Front:	15.00x22.5-16PR duplex highway tread tubeless singles.
	Rear:	11.00x20-14PR highway tread tube type duals.
Optional Tires	Front:	16.5x22.5-16PR duplex highway tread tubeless and 12.00x20-18PR Michelin radial tube type.
	Rear:	11.00x20-14PR highway tread SRL-1 or HCT tube type radial and 12.00x20-18PR radial tube type.
Brakes	Full air on all wheels. Air dryer provided to preclude moisture accumulation. Spring set emergency brake on both rear axles with emergency release.	

Lights	Full lighting including head, tail, braking, reversing, directional and hazard warning lights.	
Cab	One man design, all steel fabricated with acoustical lining and tinted safety glass throughout. Deluxe fabric covered fully adjustable seat. Complete driving controls and engine instrumentation including tachometer, speedometer, voltmeter, water temp. oil pressure, fuel level, air pressure gauge. Other standard items include hot water heater/defroster, electric windshield wash/wipe, fire extinguisher, seat belt and door and window locks.	
Maximum Speed	51.5 MPH (82.9 kph)	
Gross Vehicle Weight & Axle Loads	BASIC STANDARD MACHINE	
	Front Tandem:	28,743 lbs. (13,038 kgs)
	Rear Tandem:	43,884 lbs. (19,906 kgs)
	G.V.W.:	72,627 lbs. (32,944 kgs) (includes 32 ft. swingaway)
Miscellaneous Standard Equipment	Dual rear view mirrors, hookblock tiedown sling, electronic back-up alarm, light package.	
Optional Equipment	<ul style="list-style-type: none"> * Immersion engine block heater * Hookblocks/Headache balls * Spare wheel assembly * Pintle hook front and rear * Working lights * Engine low oil pressure, high water temperature audio/visual warning system * 360° rotating beacon * Tool kit * Dual base boom mounted floodlights 	

†Patented Grove feature or patent pending.

*Denotes optional equipment.

17110101010



GROVE
worldwide

Grove Worldwide - World Headquarters
1565 Buchanan Trail East
Shady Grove, Pennsylvania 17256
Phone: (717) 597-8121
Telex: 1842308 Fax: (717) 597-4062

Grove North America
P.O. Box 21, Shady Grove, Pennsylvania 17256
Western Hemisphere, Asia/Pacific
Phone: (717) 597-8121
Telex: 1842308 Fax: (717) 597-4062

Grove Europe, Crown Works
Sunderland SR4 6TT, England
Europe, Africa, Middle East, Near East
Phone: (091) 565-6281
Telex: 53484 CRANES G Fax: (091) 564-0442

Constant improvement and engineering progress makes it necessary that we reserve the right to make specification, equipment and price changes without notice. Illustrations shown may include optional equipment and accessories and may not include all standard equipment.

Distributed By: